

\$184,000 - 1123 9363 Simpson Drive, Edmonton

MLS® #E4430853

\$184,000

2 Bedroom, 2.00 Bathroom, 1,245 sqft

Condo / Townhouse on 0.00 Acres

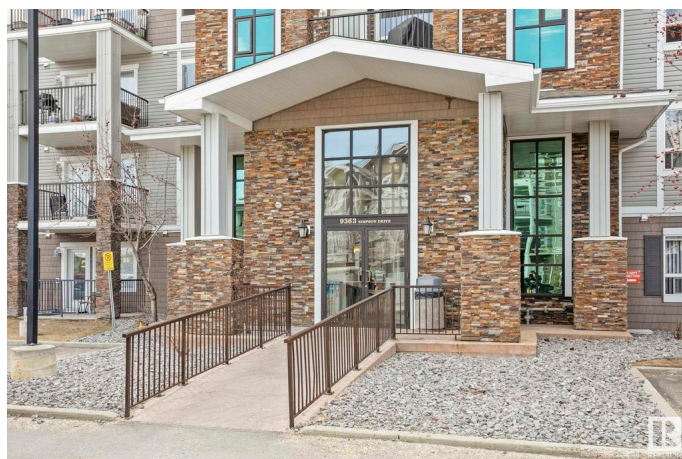
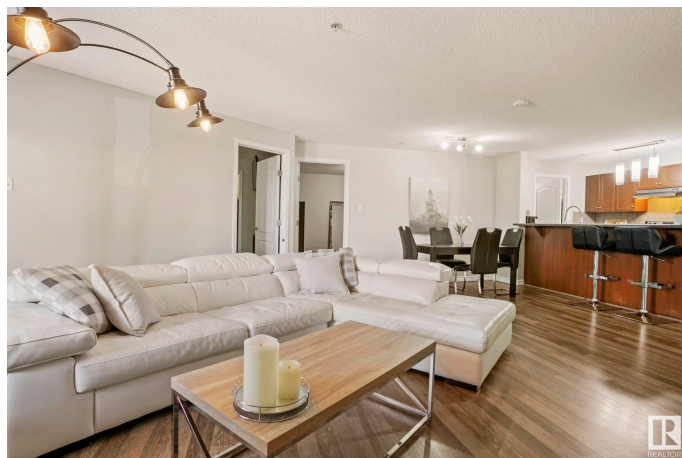
South Terwillegar, Edmonton, AB

Welcome to this spacious 2-bedroom + den, 2 full bathroom home in a highly desirable community. Thoughtfully designed with an open-concept layout, this home features a modern kitchen with stainless steel appliances, a large island, and plenty of storage—perfect for both everyday living and entertaining. The primary suite includes a walk-in closet and a full ensuite bath, while the second bedroom is generously sized and ideal for family or guests. The versatile den offers the perfect space for a home office or reading nook. Enjoy year-round comfort with quality finishes, large windows, and a private outdoor area for relaxing. Conveniently located near parks, schools, shopping, and transit—this home truly has it all. Don't miss your chance to make it yours!

Built in 2008

Essential Information

MLS® #	E4430853
Price	\$184,000
Bedrooms	2
Bathrooms	2.00
Full Baths	2
Square Footage	1,245
Acres	0.00
Year Built	2008



Type	Condo / Townhouse
Sub-Type	Lowrise Apartment
Style	Single Level Apartment
Status	Active

Community Information

Address	1123 9363 Simpson Drive
Area	Edmonton
Subdivision	South Terwillegar
City	Edmonton
County	ALBERTA
Province	AB
Postal Code	T6R 0N2

Amenities

Amenities	Detectors Smoke, Exercise Room, Parking-Visitor
Parking	Stall

Interior

Interior Features	ensuite bathroom
Appliances	Dishwasher-Built-In, Hood Fan, Refrigerator, Stacked Washer/Dryer, Stove-Electric, Window Coverings
Heating	In Floor Heat System, Natural Gas
# of Stories	4
Stories	1
Has Basement	Yes
Basement	None, No Basement

Exterior

Exterior	Wood, Stone, Vinyl
Exterior Features	Golf Nearby, Landscaped, Playground Nearby, Public Swimming Pool, Public Transportation, Schools, Shopping Nearby
Roof	Asphalt Shingles
Construction	Wood, Stone, Vinyl
Foundation	Concrete Perimeter

Additional Information

Date Listed	April 14th, 2025
Days on Market	69

Zoning	Zone 14
Condo Fee	\$900

DATA IS DEEMED RELIABLE BUT IS NOT GUARANTEED ACCURATE BY THE REALTORS® ASSOCIATION OF EDMONTON. COPYRIGHT 2025 BY THE REALTORS® ASSOCIATION OF EDMONTON. ALL RIGHTS RESERVED. Trademarks are owned or controlled by the Canadian Real Estate Association (CREA) and identify real estate professionals who are members of CREA (REALTOR®, REALTORS®) and/or the quality of services they provide (MLS®, Multiple Listing Service®)

Listing information last updated on June 22nd, 2025 at 12:47pm MDT