

\$535,000 - 20824 96 Avenue, Edmonton

MLS® #E4431373

\$535,000

3 Bedroom, 2.50 Bathroom, 1,774 sqft
Single Family on 0.00 Acres

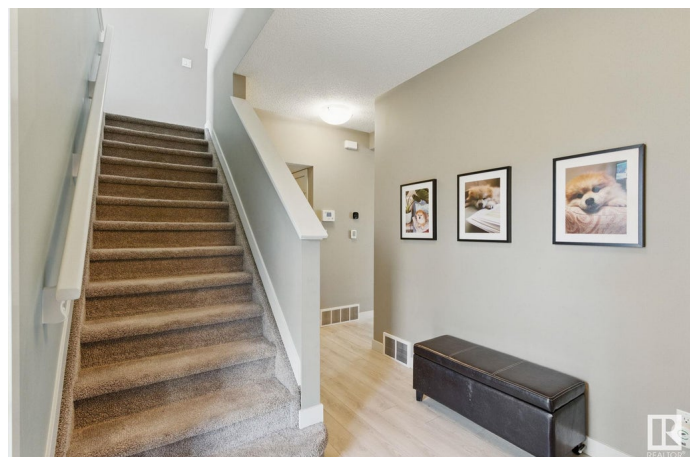
Webber Greens, Edmonton, AB

This stunning 2 storey home in Webber Greens is a must see! Beautifully designed inside and out, it offers 3 spacious bedrooms and 2.5 bathrooms. The bright and open main floor features modern finishes, creating a warm and inviting atmosphere throughout. The kitchen is perfect for entertaining, with a large granite island and stainless steel appliances. Outside you have a beautiful deck, as well as a nice yard with some fruit trees. The primary bedroom boasts a gorgeous 4 piece ensuite and a walk-in closet. There is a beautiful bonus room with an abundance of natural light! This home also features solar panels to reduce your energy bills. Located just minutes away from Lewis Estates Golf Course, grocery stores, schools and parks. you'll enjoy the convenience of easy access to everything you need while being able to explore the vibrant neighbourhood.

Built in 2016

Essential Information

MLS® #	E4431373
Price	\$535,000
Bedrooms	3
Bathrooms	2.50
Full Baths	2
Half Baths	1



Square Footage	1,774
Acres	0.00
Year Built	2016
Type	Single Family
Sub-Type	Detached Single Family
Style	2 Storey
Status	Active

Community Information

Address	20824 96 Avenue
Area	Edmonton
Subdivision	Webber Greens
City	Edmonton
County	ALBERTA
Province	AB
Postal Code	T5T 4J7

Amenities

Amenities	Air Conditioner, Ceiling 9 ft., Deck, Detectors Smoke, Hot Water Natural Gas, Patio, Solar Equipment
Parking	Double Garage Attached

Interior

Interior Features	ensuite bathroom
Appliances	Air Conditioning-Central, Dishwasher-Built-In, Dryer, Garage Control, Garage Opener, Microwave Hood Fan, Refrigerator, Stove-Electric, Washer, Window Coverings
Heating	Forced Air-1, Natural Gas
Stories	2
Has Basement	Yes
Basement	Full, Unfinished

Exterior

Exterior	Wood, Stone, Vinyl
Exterior Features	Flat Site, Fruit Trees/Shrubs, Golf Nearby, Landscaped, Playground Nearby, Public Transportation, Schools, Shopping Nearby
Roof	Asphalt Shingles
Construction	Wood, Stone, Vinyl
Foundation	Concrete Perimeter

Additional Information

Date Listed April 17th, 2025

Days on Market 14

Zoning Zone 58

DATA IS DEEMED RELIABLE BUT IS NOT GUARANTEED ACCURATE BY THE REALTORS® ASSOCIATION OF EDMONTON. COPYRIGHT 2025 BY THE REALTORS® ASSOCIATION OF EDMONTON. ALL RIGHTS RESERVED. Trademarks are owned or controlled by the Canadian Real Estate Association (CREA) and identify real estate professionals who are members of CREA (REALTOR®, REALTORS®) and/or the quality of services they provide (MLS®, Multiple Listing Service®)

Listing information last updated on May 1st, 2025 at 2:33pm MDT