

\$539,900 - 5732 168 Avenue, Edmonton

MLS® #E4432306

\$539,900

3 Bedroom, 2.50 Bathroom, 1,678 sqft

Single Family on 0.00 Acres

McConachie Area, Edmonton, AB

This nearly 1700 sq ft open concept home has a gorgeous kitchen w/rich dark cabinets, granite counter tops, S/S appliances & corner pantry. A breakfast nook w/access to the backyard via a sliding door is just off the kitchen. A large living room w/corner gas fireplace & formal dining room/flex space tie into the open concept of this home & make the perfect space for entertaining. 1/2 bath finishes off the main floor. Walking up the stairs to the 2nd level features laundry room, spacious primary bedroom w/huge walk-in closet. The 5 pc ensuite has double sinks, a large garden soaker tub & stand up shower. 2 more large bedrooms & a 4 pc bath finish off the 2nd level. The backyard is a perfect size w/an oversized deck, gas line to BBQ & gorgeous landscaping. Don't forget about large double ATTACHED garage! With easy access to schools, shopping, transit & Henday this home is in the perfect location! This home also comes w/ central A/C & shed! 2024 taxes \$4,542.58. Lot size 446.44 sq m.

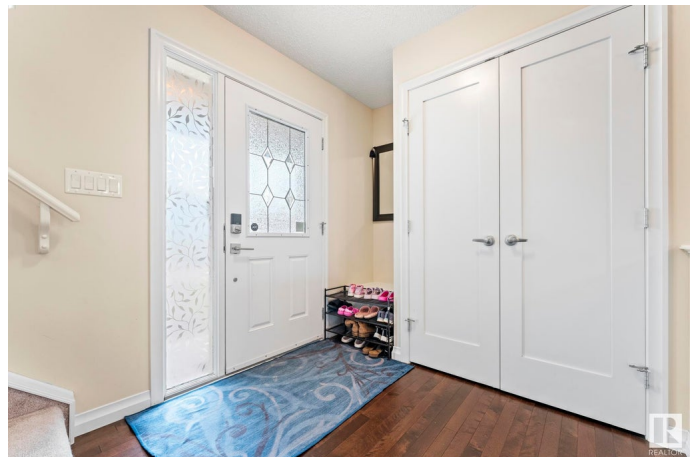
Built in 2009

Essential Information

MLS® # E4432306

Price \$539,900

Bedrooms 3



Bathrooms	2.50
Full Baths	2
Half Baths	1
Square Footage	1,678
Acres	0.00
Year Built	2009
Type	Single Family
Sub-Type	Detached Single Family
Style	2 Storey
Status	Active

Community Information

Address	5732 168 Avenue
Area	Edmonton
Subdivision	McConachie Area
City	Edmonton
County	ALBERTA
Province	AB
Postal Code	T5Y 0K5

Amenities

Amenities	Air Conditioner, Deck, Vinyl Windows
Parking	Double Garage Attached, Over Sized

Interior

Interior Features	ensuite bathroom
Appliances	Air Conditioning-Central, Dishwasher-Built-In, Dryer, Garage Control, Garage Opener, Microwave Hood Fan, Refrigerator, Storage Shed, Stove-Electric, Washer
Heating	Forced Air-1, Natural Gas
Fireplace	Yes
Fireplaces	Corner
Stories	2
Has Basement	Yes
Basement	Full, Unfinished

Exterior

Exterior	Wood, Stone, Vinyl
Exterior Features	Fenced, Fruit Trees/Shrubs, Landscaped, Playground Nearby, Public

	Transportation, Schools, Shopping Nearby
Roof	Asphalt Shingles
Construction	Wood, Stone, Vinyl
Foundation	Concrete Perimeter

Additional Information

Date Listed	April 23rd, 2025
Days on Market	8
Zoning	Zone 03

DATA IS DEEMED RELIABLE BUT IS NOT GUARANTEED ACCURATE BY THE REALTORS® ASSOCIATION OF EDMONTON. COPYRIGHT 2025 BY THE REALTORS® ASSOCIATION OF EDMONTON. ALL RIGHTS RESERVED. Trademarks are owned or controlled by the Canadian Real Estate Association (CREA) and identify real estate professionals who are members of CREA (REALTOR®, REALTORS®) and/or the quality of services they provide (MLS®, Multiple Listing Service®)

Listing information last updated on May 1st, 2025 at 1:47pm MDT