

\$458,888 - 10826 32a Avenue, Edmonton

MLS® #E4432598

\$458,888

3 Bedroom, 2.50 Bathroom, 1,294 sqft

Single Family on 0.00 Acres

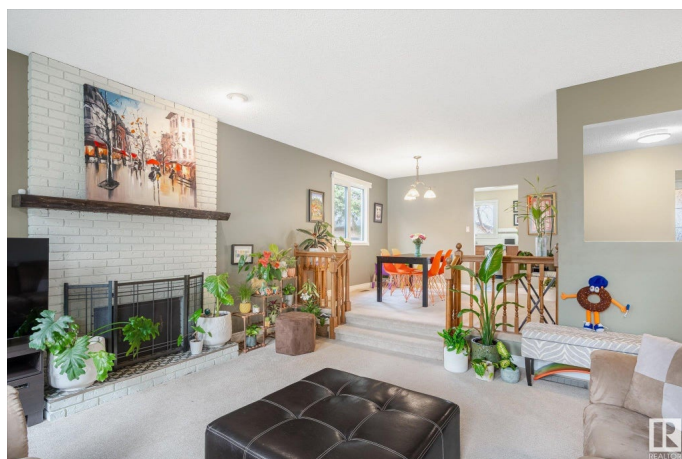
Steinhauer, Edmonton, AB

Lovingly maintained and thoughtfully updated, this 1294 sq ft bungalow in sought-after Steinhauer is a gem! Recent upgrades include a full kitchen renovation, new shingles, triple-pane windows, furnace, hot water tank, central AC, fencing, garage door, custom blinds, and fresh paint. Featuring 3 bedrooms and 2 full baths—including a private ensuite in the spacious primary and a jetted tub in the main bath. The oversized double attached garage offers great storage. The basement is partially finished with framed walls, ready for your personal touch. Enjoy a landscaped yard in a quiet, established neighborhood just steps to Century Park LRT, schools, and amenities. Whether you're starting out, downsizing, or seeking a move-in-ready home with room to grow, this one checks the boxes!

Built in 1975

Essential Information

MLS® #	E4432598
Price	\$458,888
Bedrooms	3
Bathrooms	2.50
Full Baths	2
Half Baths	1
Square Footage	1,294
Acres	0.00



Year Built	1975
Type	Single Family
Sub-Type	Detached Single Family
Style	Bungalow
Status	Active

Community Information

Address	10826 32a Avenue
Area	Edmonton
Subdivision	Steinhauer
City	Edmonton
County	ALBERTA
Province	AB
Postal Code	T6J 3B9

Amenities

Amenities	Air Conditioner, No Animal Home, No Smoking Home, Patio
Parking Spaces	4
Parking	Double Garage Attached, Insulated, Over Sized

Interior

Interior Features	ensuite bathroom
Appliances	Dishwasher-Built-In, Dryer, Freezer, Hood Fan, Refrigerator, Storage Shed, Stove-Electric, Washer, Window Coverings
Heating	Forced Air-1, Natural Gas
Fireplace	Yes
Fireplaces	Brick Facing, Mantel
Stories	1
Has Basement	Yes
Basement	Full, Partially Finished

Exterior

Exterior	Wood, Brick, Stucco
Exterior Features	Back Lane, Fenced, Landscaped, Playground Nearby, Public Transportation, Schools, Shopping Nearby
Roof	Asphalt Shingles
Construction	Wood, Brick, Stucco
Foundation	Concrete Perimeter

School Information

Elementary	Steinhauer, St. Augustine
Middle	D.S. MacKenzie, St Laurent
High	Harry Ainlay, St Laurent

Additional Information

Date Listed	April 24th, 2025
Days on Market	8
Zoning	Zone 16

DATA IS DEEMED RELIABLE BUT IS NOT GUARANTEED ACCURATE BY THE REALTORS® ASSOCIATION OF EDMONTON. COPYRIGHT 2025 BY THE REALTORS® ASSOCIATION OF EDMONTON. ALL RIGHTS RESERVED.Trademarks are owned or controlled by the Canadian Real Estate Association (CREA) and identify real estate professionals who are members of CREA (REALTOR®, REALTORS®) and/or the quality of services they provide (MLS®, Multiple Listing Service®)

Listing information last updated on May 2nd, 2025 at 6:17am MDT