

# \$639,990 - 1306 32a Street, Edmonton

MLS® #E4434514

## \$639,990

4 Bedroom, 3.50 Bathroom, 1,915 sqft  
Single Family on 0.00 Acres

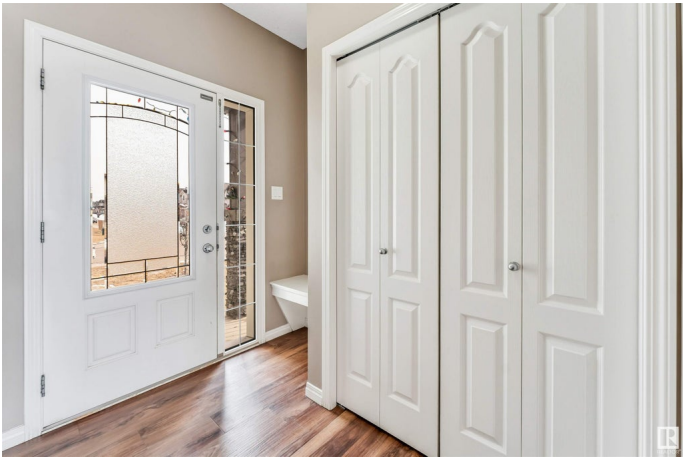
Laurel, Edmonton, AB

Welcome to this stunning 4-bedrooms plus DEN, 3.5-bathrooms,bonus room and SEPARATE ENTRANCE With FULLY FINISHED BASEMENT having additional rooms,a second kitchen and Laundry in the highly sought-after LAUREL community of Edmonton, AB. This EAST-facing (Regular LOT) home is designed for modern living, featuring stainless steel appliances, Upgraded kitchen,and a prime location near all essential amenities provides both comfort and functionality.Enjoy professionally landscaped outdoor spaces, perfect for relaxation and entertaining. Plus, with walking distance to parks, top-rated schools, grocery stores, and public transit, everything you need is just moments away!

Built in 2017

### Essential Information

MLS® #	E4434514
Price	\$639,990
Bedrooms	4
Bathrooms	3.50
Full Baths	3
Half Baths	1
Square Footage	1,915
Acres	0.00



Year Built	2017
Type	Single Family
Sub-Type	Detached Single Family
Style	2 Storey
Status	Active

### **Community Information**

Address	1306 32a Street
Area	Edmonton
Subdivision	Laurel
City	Edmonton
County	ALBERTA
Province	AB
Postal Code	T6T 0Z3

### **Amenities**

Amenities	Air Conditioner, Ceiling 9 ft., Deck, No Animal Home, No Smoking Home, See Remarks
Parking	Double Garage Attached

### **Interior**

Interior Features	ensuite bathroom
Appliances	Dishwasher-Built-In, Dryer, Fan-Ceiling, Garage Control, Garage Opener, Hood Fan, Oven-Microwave, Refrigerator, Stove-Gas, Washer
Heating	Forced Air-1, Natural Gas
Fireplace	Yes
Fireplaces	See Remarks
Stories	2
Has Suite	Yes
Has Basement	Yes
Basement	Full, Finished

### **Exterior**

Exterior	Wood, Vinyl
Exterior Features	Airport Nearby, Corner Lot, Fenced, Landscaped, Park/Reserve, Picnic Area, Playground Nearby, Public Transportation, Schools, Shopping Nearby, See Remarks
Roof	Asphalt Shingles
Construction	Wood, Vinyl

Foundation                Concrete Perimeter

**School Information**

Elementary                Svend Hansen School  
Middle                      Svend Hansen School  
High                        Elder Dr. Francis Whiskeyj

**Additional Information**

Date Listed                May 5th, 2025  
Days on Market        90  
Zoning                      Zone 30

DATA IS DEEMED RELIABLE BUT IS NOT GUARANTEED ACCURATE BY THE REALTORS® ASSOCIATION OF EDMONTON. COPYRIGHT 2025 BY THE REALTORS® ASSOCIATION OF EDMONTON. ALL RIGHTS RESERVED.Trademarks are owned or controlled by the Canadian Real Estate Association (CREA) and identify real estate professionals who are members of CREA (REALTOR®, REALTORS®) and/or the quality of services they provide (MLS®, Multiple Listing Service®)  
Listing information last updated on August 2nd, 2025 at 10:17pm MDT