

## \$204,900 - 84 13825 155 Avenue, Edmonton

MLS® #E4435750

**\$204,900**

2 Bedroom, 1.50 Bathroom, 1,028 sqft

Condo / Townhouse on 0.00 Acres

Carlton, Edmonton, AB

Affordable Living at Its Finest – First floor corner unit with 2 Bedroom Bungalow Townhouse in Tuscan Village! Condo fees include heat and water. This spacious and well-maintained 2-bedroom, 1.5-bath bungalow townhouse offers comfortable living with a bright kitchen, 2 great size bedrooms, main floor laundry, and a cozy fireplace in the living room. Enjoy the convenience of 2 underground parking stalls, and a great size family room in the basement and plenty of storage space. Private facing patio Located in the desirable Tuscan Village, this home combines affordability with practicality in a fantastic location close to amenities. Located in a great area, this home is ideal for first-time buyers, downsizers, or anyone looking for low-maintenance living without sacrificing space or convenience.

Built in 2008

### Essential Information

MLS® #	E4435750
Price	\$204,900
Bedrooms	2
Bathrooms	1.50
Full Baths	1
Half Baths	1
Square Footage	1,028



Acres	0.00
Year Built	2008
Type	Condo / Townhouse
Sub-Type	Townhouse
Style	Bungalow
Status	Active

### Community Information

Address	84 13825 155 Avenue
Area	Edmonton
Subdivision	Carlton
City	Edmonton
County	ALBERTA
Province	AB
Postal Code	T6V 0B8

### Amenities

Amenities	No Animal Home, No Smoking Home, See Remarks
Parking	Parkade

### Interior

Appliances	Dishwasher-Built-In, Dryer, Refrigerator, Stove-Electric, Washer
Heating	Heat Pump, Natural Gas
Stories	2
Has Basement	Yes
Basement	Partial, Finished

### Exterior

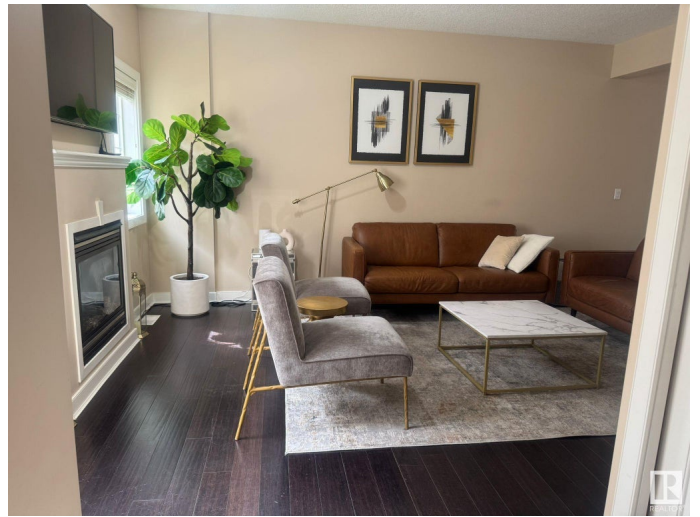
Exterior	Wood, Stucco
Exterior Features	Backs Onto Park/Trees, Landscaped, Playground Nearby, Public Transportation, Schools, Shopping Nearby
Roof	Asphalt Shingles
Construction	Wood, Stucco
Foundation	Concrete Perimeter

### Additional Information

Date Listed	May 10th, 2025
Days on Market	8
Zoning	Zone 27

Condo Fee

\$636



DATA IS DEEMED RELIABLE BUT IS NOT GUARANTEED ACCURATE BY THE REALTORS® ASSOCIATION OF EDMONTON. COPYRIGHT 2025 BY THE REALTORS® ASSOCIATION OF EDMONTON. ALL RIGHTS RESERVED. Trademarks are owned or controlled by the Canadian Real Estate Association (CREA) and identify real estate professionals who are members of CREA (REALTOR®, REALTORS®) and/or the quality of services they provide (MLS®, Multiple Listing Service®)

Listing information last updated on May 18th, 2025 at 5:02am MDT