

\$484,900 - 1914 Hammond Place, Edmonton

MLS® #E4435902

\$484,900

3 Bedroom, 2.50 Bathroom, 1,501 sqft

Single Family on 0.00 Acres

The Hamptons, Edmonton, AB

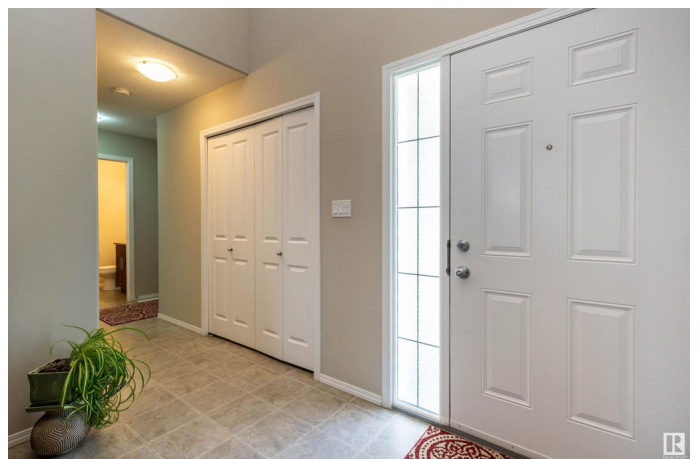
Welcome to your dream home in the desirable Hamptons! This stunning 1500 sq ft, 2-story residence is perfectly situated in a quiet cul-de-sac, offering both privacy and a family-friendly environment. Step inside and be greeted by a spacious living room with gas fireplace and a large dining room, ideal for entertaining and family gatherings. The expansion kitchen features modern stainless steel appliances, making meal preparation a joy. A convenient 2 piece bath on the main floor adds to the home's functionality. Upstairs, you'll find 2 generously sized bedrooms, a well-appointed 4-piece bathroom, and a luxurious Primary bedroom complete with a private 4-piece ensuite. Enjoy the comfort of A/C throughout the home. The property includes a double garage, providing ample space for vehicles and storage. Outside, the huge west-facing backyard is perfect for outdoor activities and relaxation, offering plenty of space for gardening, play, and summer bbqs. Don't miss the opportunity to own this exceptional home!

Built in 2010

Essential Information

MLS® # E4435902

Price \$484,900



Bedrooms	3
Bathrooms	2.50
Full Baths	2
Half Baths	1
Square Footage	1,501
Acres	0.00
Year Built	2010
Type	Single Family
Sub-Type	Detached Single Family
Style	2 Storey
Status	Active

Community Information

Address	1914 Hammond Place
Area	Edmonton
Subdivision	The Hamptons
City	Edmonton
County	ALBERTA
Province	AB
Postal Code	T6M 0K3

Amenities

Amenities	Air Conditioner, Carbon Monoxide Detectors, Detectors Smoke
Parking	Double Garage Attached

Interior

Interior Features	ensuite bathroom
Appliances	Air Conditioning-Central, Dishwasher-Built-In, Dryer, Garage Control, Garage Opener, Refrigerator, Stove-Electric, Washer, Window Coverings
Heating	Forced Air-1, Natural Gas
Fireplace	Yes
Fireplaces	Mantel, Tile Surround
Stories	2
Has Basement	Yes
Basement	Full, Unfinished

Exterior

Exterior	Wood, Vinyl
----------	-------------

Exterior Features	Public Transportation, Schools, Shopping Nearby
Roof	Asphalt Shingles
Construction	Wood, Vinyl
Foundation	Concrete Perimeter

Additional Information

Date Listed	May 12th, 2025
Days on Market	35
Zoning	Zone 58

DATA IS DEEMED RELIABLE BUT IS NOT GUARANTEED ACCURATE BY THE REALTORS® ASSOCIATION OF EDMONTON. COPYRIGHT 2025 BY THE REALTORS® ASSOCIATION OF EDMONTON. ALL RIGHTS RESERVED.Trademarks are owned or controlled by the Canadian Real Estate Association (CREA) and identify real estate professionals who are members of CREA (REALTOR®, REALTORS®) and/or the quality of services they provide (MLS®, Multiple Listing Service®)

Listing information last updated on June 16th, 2025 at 8:47pm MDT