

## \$365,900 - 15 2803 14 Avenue, Edmonton

MLS® #E4436339

**\$365,900**

3 Bedroom, 2.50 Bathroom, 1,428 sqft  
Condo / Townhouse on 0.00 Acres

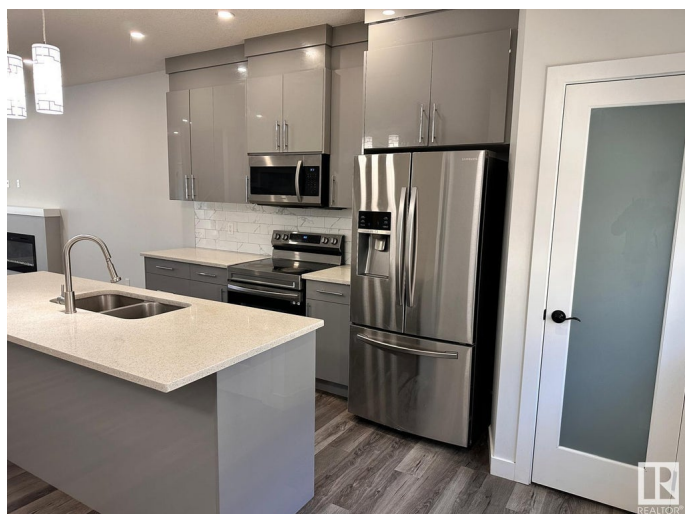
Laurel, Edmonton, AB

Beautiful move-in ready town House .  
Featuring 3 spacious bedrooms, 2.5  
bathrooms, With laundry located upstairs , this  
home offers flexibility with a lower-level flex  
space—ideal for a home office, gym, or  
storage. Including quartz countertops, a large  
kitchen island, plenty of pot lights, tile and vinyl  
flooring, an electric fireplace, and soaring 9 ft  
ceilings. The double attached garage adds  
everyday ease and extra storage. Facing  
Green space perfect for outdoor relaxation and  
step out for walking trails Conveniently located  
near by Grocery store ,schools, parks,  
playgrounds, the Rec Centre, and public  
transit all close by. Easy access to Anthony  
Henday Drive.

Built in 2021

### Essential Information

MLS® #	E4436339
Price	\$365,900
Bedrooms	3
Bathrooms	2.50
Full Baths	2
Half Baths	1
Square Footage	1,428
Acres	0.00
Year Built	2021



Type	Condo / Townhouse
Sub-Type	Townhouse
Style	2 Storey
Status	Active

### Community Information

Address	15 2803 14 Avenue
Area	Edmonton
Subdivision	Laurel
City	Edmonton
County	ALBERTA
Province	AB
Postal Code	T6T 1A8

### Amenities

Amenities	Parking-Visitor, Patio
Parking	Double Garage Attached

### Interior

Interior Features	ensuite bathroom
Appliances	Dishwasher-Built-In, Garage Control, Garage Opener, Microwave Hood Fan, Refrigerator, Stacked Washer/Dryer, Stove-Countertop Electric, Window Coverings
Heating	Forced Air-1, Natural Gas
Fireplace	Yes
Fireplaces	Wall Mount
Stories	2
Has Basement	Yes
Basement	Partial, Partially Finished

### Exterior

Exterior	Wood, Vinyl
Exterior Features	Playground Nearby, Public Transportation, Schools, Shopping Nearby, See Remarks
Roof	Asphalt Shingles
Construction	Wood, Vinyl
Foundation	Concrete Perimeter

### Additional Information

Date Listed	May 14th, 2025
-------------	----------------

Days on Market	83
Zoning	Zone 30
Condo Fee	\$230

DATA IS DEEMED RELIABLE BUT IS NOT GUARANTEED ACCURATE BY THE REALTORS® ASSOCIATION OF EDMONTON. COPYRIGHT 2025 BY THE REALTORS® ASSOCIATION OF EDMONTON. ALL RIGHTS RESERVED. Trademarks are owned or controlled by the Canadian Real Estate Association (CREA) and identify real estate professionals who are members of CREA (REALTOR®, REALTORS®) and/or the quality of services they provide (MLS®, Multiple Listing Service®)

Listing information last updated on August 5th, 2025 at 7:17am MDT