

\$699,990 - 1665 Glastonbury Boulevard, Edmonton

MLS® #E4436416

\$699,990

5 Bedroom, 3.50 Bathroom, 2,269 sqft

Single Family on 0.00 Acres

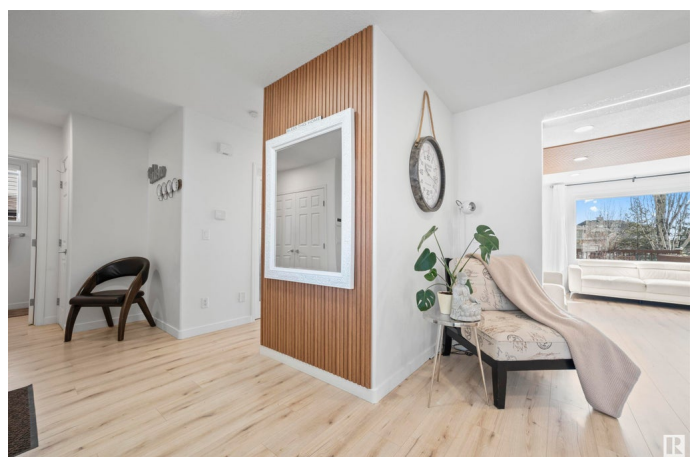
Glastonbury, Edmonton, AB

This is a very rare find. A Gorgeous fully renovated house awaits its new homeowners. Welcome to family friendly Glastonbury! This neighborhood has plenty to offer, including close by amenities, walking trails, serene ponds, recreational play areas, nearby golf courses, places of worship, reputable schools, and convenient access to the Anthony Henday. This 2-storey home has an open design with large windows that give the home a bright and airy feel. Kitchen with upgraded quartz countertops and backsplash. This home has 3 spacious bedrooms plus an office on the main floor that "CAN BE" used as a 4th bedroom and 2.5 bathrooms along with 2 additional spacious rooms with a family area in the basement. Staircase to upper floor leads to the bonus room and upper bedrooms. Master bedroom has 4-piece ensuite. Gorgeous backyard with a large deck. Tastefully landscaped with a mature tree. Two car attached garage. Shows beautifully!

Built in 2002

Essential Information

MLS® #	E4436416
Price	\$699,990
Bedrooms	5
Bathrooms	3.50



Full Baths	3
Half Baths	1
Square Footage	2,269
Acres	0.00
Year Built	2002
Type	Single Family
Sub-Type	Detached Single Family
Style	2 Storey
Status	Active

Community Information

Address	1665 Glastonbury Boulevard
Area	Edmonton
Subdivision	Glastonbury
City	Edmonton
County	ALBERTA
Province	AB
Postal Code	T5T 6P3

Amenities

Amenities	Carbon Monoxide Detectors, Deck, Detectors Smoke, Front Porch, No Animal Home, No Smoking Home
Parking	Double Garage Attached

Interior

Interior Features	ensuite bathroom
Appliances	Dryer, Garage Opener, Hood Fan, Refrigerator, Stove-Electric, Washer, Window Coverings
Heating	Forced Air-1, Natural Gas
Stories	3
Has Basement	Yes
Basement	Full, Finished

Exterior

Exterior	Wood, Vinyl
Exterior Features	Back Lane, Fenced, Public Transportation, Shopping Nearby, View Lake
Roof	Asphalt Shingles
Construction	Wood, Vinyl
Foundation	Concrete Perimeter

School Information

Elementary Lymburn School

Additional Information

Date Listed May 14th, 2025

Days on Market 81

Zoning Zone 58

HOA Fees 183.75

HOA Fees Freq. Annually

DATA IS DEEMED RELIABLE BUT IS NOT GUARANTEED ACCURATE BY THE REALTORS® ASSOCIATION OF EDMONTON. COPYRIGHT 2025 BY THE REALTORS® ASSOCIATION OF EDMONTON. ALL RIGHTS RESERVED.Trademarks are owned or controlled by the Canadian Real Estate Association (CREA) and identify real estate professionals who are members of CREA (REALTOR®, REALTORS®) and/or the quality of services they provide (MLS®, Multiple Listing Service®)
Listing information last updated on August 3rd, 2025 at 1:18pm MDT