

## \$220,000 - 119 16807 100 Avenue, Edmonton

MLS® #E4436744

**\$220,000**

2 Bedroom, 2.00 Bathroom, 859 sqft

Condo / Townhouse on 0.00 Acres

Glenwood (Edmonton), Edmonton, AB

Renovated & Modern! This bright, open-concept 2 bed, 2 bath condo features 9 foot ceilings and a south exposure with patio facing the expansive Jack Horan park. Recently renovated throughout including quartz counters in the kitchen and bathrooms, subway tile kitchen backsplash, stainless steel appliances, luxury vinyl flooring throughout, pot lights and new light fixtures. The primary bedroom features a walk-through closet to the ensuite bathroom and the second bedroom is separated on the other side of the spacious living area. Modern Style but also lots of convenience here with a walk-in laundry room with shelving and a separate huge walk-in pantry or storage room, as well as heated underground parking. This main floor unit is convenient without needing stairs, yet private as it faces the park away from the parking lot. Lots of visitor parking. No pets allowed in this well-maintained building, which also includes an exercise room and car wash area. Move in Ready with quick possession possible!

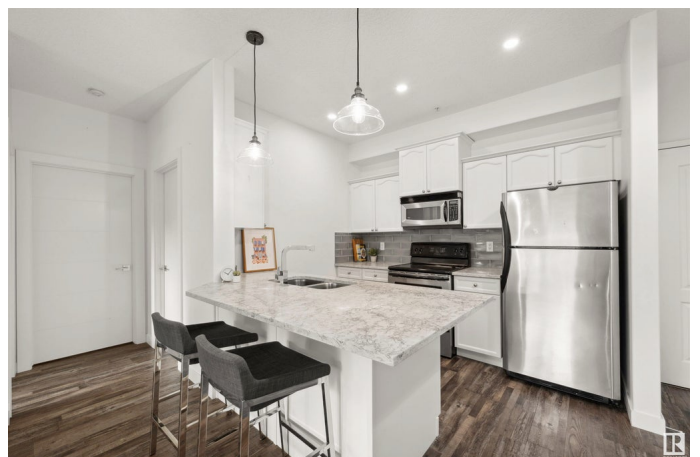
Built in 2004

### Essential Information

MLS® # E4436744

Price \$220,000

Bedrooms 2



Bathrooms	2.00
Full Baths	2
Square Footage	859
Acres	0.00
Year Built	2004
Type	Condo / Townhouse
Sub-Type	Lowrise Apartment
Style	Single Level Apartment
Status	Active

### Community Information

Address	119 16807 100 Avenue
Area	Edmonton
Subdivision	Glenwood (Edmonton)
City	Edmonton
County	ALBERTA
Province	AB
Postal Code	T5P 4Z6

### Amenities

Amenities	Car Wash, Ceiling 9 ft., Exercise Room, No Animal Home, No Smoking Home, Parking-Visitor, Security Door, Storage-In-Suite, Vinyl Windows
Parking Spaces	1
Parking	Underground

### Interior

Interior Features	ensuite bathroom
Appliances	Dishwasher-Built-In, Microwave Hood Fan, Refrigerator, Stacked Washer/Dryer, Stove-Electric
Heating	Hot Water, Natural Gas
# of Stories	4
Stories	1
Has Basement	Yes
Basement	None, No Basement

### Exterior

Exterior	Wood, Brick, Vinyl
Exterior Features	Backs Onto Park/Trees, Park/Reserve, Private Setting, Public Transportation, Schools, Shopping Nearby

Roof	Asphalt Shingles
Construction	Wood, Brick, Vinyl
Foundation	Concrete Perimeter

**Additional Information**

Date Listed	May 15th, 2025
Days on Market	10
Zoning	Zone 22
Condo Fee	\$496

DATA IS DEEMED RELIABLE BUT IS NOT GUARANTEED ACCURATE BY THE REALTORS® ASSOCIATION OF EDMONTON. COPYRIGHT 2025 BY THE REALTORS® ASSOCIATION OF EDMONTON. ALL RIGHTS RESERVED.Trademarks are owned or controlled by the Canadian Real Estate Association (CREA) and identify real estate professionals who are members of CREA (REALTOR®, REALTORS®) and/or the quality of services they provide (MLS®, Multiple Listing Service®)

Listing information last updated on May 24th, 2025 at 10:32pm MDT