

# \$519,000 - 3830 112 Avenue, Edmonton

MLS® #E4437553

**\$519,000**

2 Bedroom, 2.00 Bathroom, 1,311 sqft  
Single Family on 0.00 Acres

Beverly Heights, Edmonton, AB

Excellent investment opportunity in Beverley Hts! Original home on a double sized lot (approx 100' x 119') along a quiet tree lined avenue. Blocks away from Ada Boulevard and the river valley.

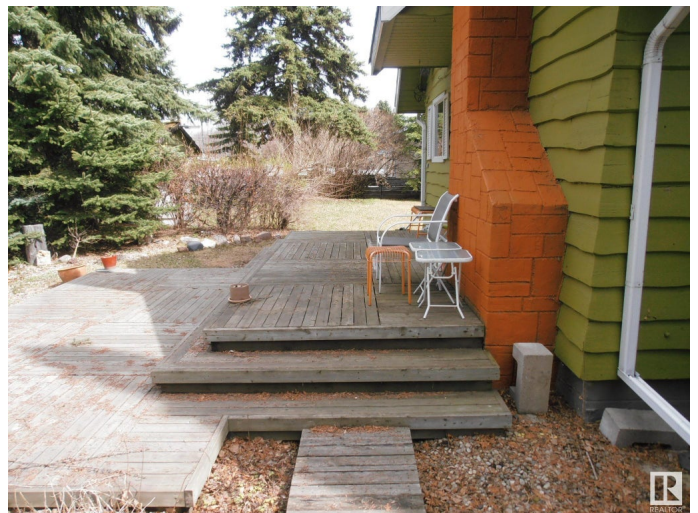
Built in 1943

## Essential Information

MLS® #	E4437553
Price	\$519,000
Bedrooms	2
Bathrooms	2.00
Full Baths	2
Square Footage	1,311
Acres	0.00
Year Built	1943
Type	Single Family
Sub-Type	Detached Single Family
Style	1 and Half Storey
Status	Active

## Community Information

Address	3830 112 Avenue
Area	Edmonton
Subdivision	Beverly Heights
City	Edmonton
County	ALBERTA



Province	AB
Postal Code	T5W 0M6

### **Amenities**

Amenities	See Remarks
Parking	Double Garage Detached, Parking Pad Cement/Paved

### **Interior**

Appliances	Garage Control, Garage Opener
Heating	Forced Air-1, Natural Gas
Stories	2
Has Basement	Yes
Basement	Full, Partially Finished

### **Exterior**

Exterior	Wood
Exterior Features	Back Lane, Flat Site, See Remarks
Roof	Asphalt Shingles
Construction	Wood
Foundation	Block

### **Additional Information**

Date Listed	May 21st, 2025
Days on Market	53
Zoning	Zone 23

DATA IS DEEMED RELIABLE BUT IS NOT GUARANTEED ACCURATE BY THE REALTORS® ASSOCIATION OF EDMONTON. COPYRIGHT 2025 BY THE REALTORS® ASSOCIATION OF EDMONTON. ALL RIGHTS RESERVED. Trademarks are owned or controlled by the Canadian Real Estate Association (CREA) and identify real estate professionals who are members of CREA (REALTOR®, REALTORS®) and/or the quality of services they provide (MLS®, Multiple Listing Service®)

Listing information last updated on July 13th, 2025 at 1:47am MDT