

\$215,000 - 813 5151 Windermere Boulevard, Edmonton

MLS® #E4438002

\$215,000

1 Bedroom, 1.00 Bathroom, 550 sqft
Condo / Townhouse on 0.00 Acres

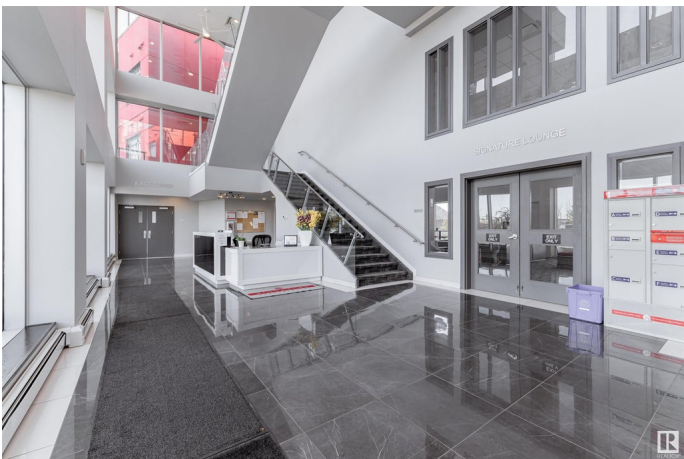
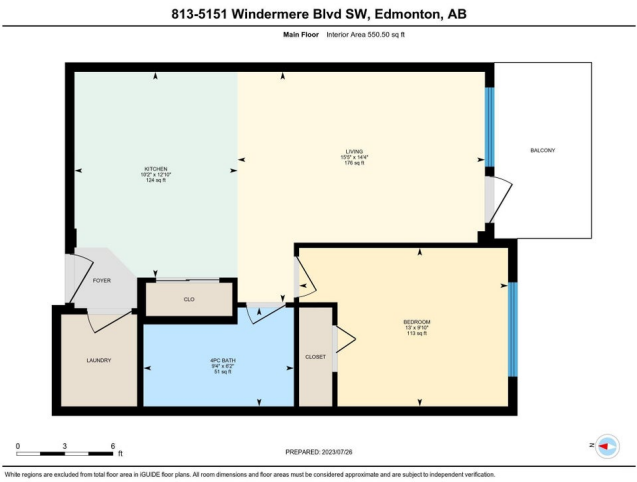
Ambleside, Edmonton, AB

Welcome to Ambleside in Southwest Edmonton. This immaculate 8th floor unit features 1 bedroom, a 4 pc bath, one TITLED underground parking, and in-suite laundry. With modern dark hardwood floor throughout, this open concept floor plan appointed with a bright and sun-soaked living room, gorgeous kitchen with s.s. appliances, white cabinetry, black quartz counters, and loads of cupboard space. Large patio door access to balcony with city view. Generous sized bedroom with large windows and 4 pc bath situated right beside the bedroom. In-suite Laundry with a stackable washer and dryer provides bonus storage space. Professional managed complex, secured door and ample visitor parking. Steps to schools, amenities, and Currents of Windermere, easy access to Henday and major transit.

Built in 2014

Essential Information

MLS® #	E4438002
Price	\$215,000
Bedrooms	1
Bathrooms	1.00
Full Baths	1
Square Footage	550
Acres	0.00



Year Built	2014
Type	Condo / Townhouse
Sub-Type	Apartment High Rise
Style	Single Level Apartment
Status	Active

Community Information

Address	813 5151 Windermere Boulevard
Area	Edmonton
Subdivision	Ambleside
City	Edmonton
County	ALBERTA
Province	AB
Postal Code	T6W 2K4

Amenities

Amenities	Exercise Room, Guest Suite, Parking-Visitor, Secured Parking, Security Door, Social Rooms
Parking Spaces	1
Parking	Heated, Underground

Interior

Appliances	Dishwasher-Built-In, Dryer, Microwave Hood Fan, Refrigerator, Stove-Electric, Washer, Window Coverings
Heating	Forced Air-1, Natural Gas
# of Stories	12
Stories	1
Has Basement	Yes
Basement	None, No Basement

Exterior

Exterior	Concrete, Stone, Stucco
Exterior Features	Playground Nearby, Public Transportation, Schools, Shopping Nearby
Roof	Tar & Gravel
Construction	Concrete, Stone, Stucco
Foundation	Concrete Perimeter

Additional Information

Date Listed	May 22nd, 2025
-------------	----------------

Days on Market	28
Zoning	Zone 56
HOA Fees	105
HOA Fees Freq.	Annually
Condo Fee	\$350

DATA IS DEEMED RELIABLE BUT IS NOT GUARANTEED ACCURATE BY THE REALTORS® ASSOCIATION OF EDMONTON. COPYRIGHT 2025 BY THE REALTORS® ASSOCIATION OF EDMONTON. ALL RIGHTS RESERVED. Trademarks are owned or controlled by the Canadian Real Estate Association (CREA) and identify real estate professionals who are members of CREA (REALTOR®, REALTORS®) and/or the quality of services they provide (MLS®, Multiple Listing Service®)

Listing information last updated on June 19th, 2025 at 12:18pm MDT