

## \$320,000 - 318 2035 Grantham Court, Edmonton

MLS® #E4438235

**\$320,000**

2 Bedroom, 2.00 Bathroom, 1,389 sqft

Condo / Townhouse on 0.00 Acres

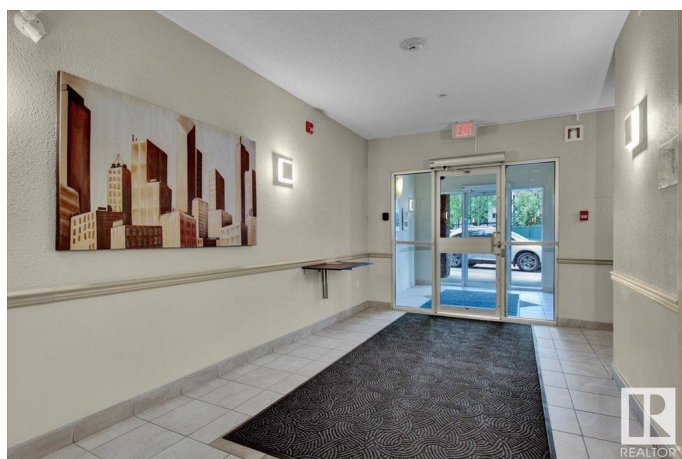
Glastonbury, Edmonton, AB

Step into comfort and style with this beautifully renovated 2 bedroom plus Den, 2 bathroom end unit condo offering 1400 sq ft of open-concept living space. Featuring fresh paint, new flooring, updated fixtures, and brand new blinds, this home offers a crisp, move-in ready feel throughout. Enjoy the comfort of air conditioning and the convenience of tandem parking for two vehicles. Need extra space? This unit includes two private storage rooms, perfect for seasonal items, bikes, or hobby gear. The building is loaded with amenities including a fully equipped gym, workshop, social room, guest suite, and a car wash bay – ideal for active, community-focused lifestyles. Don't miss this opportunity to own a bright, spacious condo in a well-maintained and well managed building complete with great features and incredible value.

Built in 2008

### Essential Information

MLS® #	E4438235
Price	\$320,000
Bedrooms	2
Bathrooms	2.00
Full Baths	2
Square Footage	1,389



Acres	0.00
Year Built	2008
Type	Condo / Townhouse
Sub-Type	Lowrise Apartment
Style	Single Level Apartment
Status	Active

### Community Information

Address	318 2035 Grantham Court
Area	Edmonton
Subdivision	Glastonbury
City	Edmonton
County	ALBERTA
Province	AB
Postal Code	T5T 3X4

### Amenities

Amenities	Air Conditioner, Car Wash, Closet Organizers, Exercise Room, No Smoking Home, Parking-Visitor, Party Room, Recreation Room/Centre, Secured Parking, Social Rooms, Storage-Locker Room, Workshop, See Remarks
Parking Spaces	2
Parking	Tandem, Underground

### Interior

Interior Features	ensuite bathroom
Appliances	Dishwasher-Built-In, Dryer, Microwave Hood Fan, Refrigerator, Stove-Electric, Washer
Heating	In Floor Heat System, Natural Gas
# of Stories	4
Stories	1
Has Basement	Yes
Basement	None, No Basement

### Exterior

Exterior	Wood, Stucco
Exterior Features	Golf Nearby, Landscaped, No Through Road, Playground Nearby, Public Transportation, Shopping Nearby, See Remarks
Roof	Tar & Gravel
Construction	Wood, Stucco

Foundation                      Concrete Perimeter

**Additional Information**

Date Listed                      May 23rd, 2025  
Days on Market                24  
Zoning                              Zone 58  
Condo Fee                        \$829

DATA IS DEEMED RELIABLE BUT IS NOT GUARANTEED ACCURATE BY THE REALTORS® ASSOCIATION OF EDMONTON. COPYRIGHT 2025 BY THE REALTORS® ASSOCIATION OF EDMONTON. ALL RIGHTS RESERVED.Trademarks are owned or controlled by the Canadian Real Estate Association (CREA) and identify real estate professionals who are members of CREA (REALTOR®, REALTORS®) and/or the quality of services they provide (MLS®, Multiple Listing Service®)  
Listing information last updated on June 16th, 2025 at 5:17pm MDT