

\$529,900 - 3613 2 Street Nw, Edmonton

MLS® #E4438441

\$529,900

3 Bedroom, 2.50 Bathroom, 1,811 sqft

Single Family on 0.00 Acres

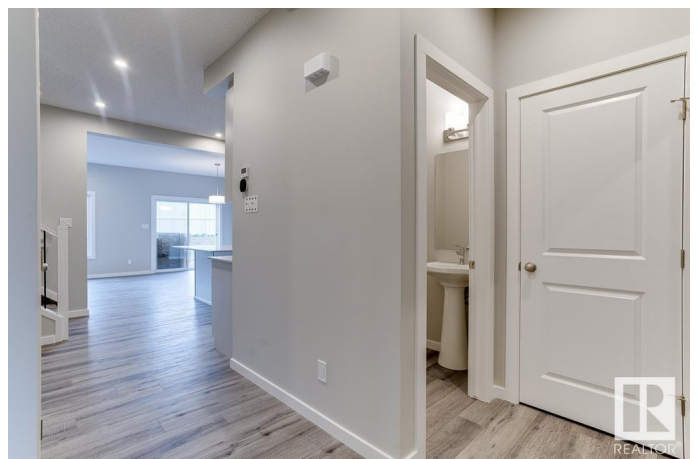
Maple Crest, Edmonton, AB

Welcome to 3 Bed room + BONUS ROOM house in the desirable community of Maple Crest. It consists of a bright & open main floor featuring open concept living room, Kitchen, dinning area & 2 pc bathroom. Kitchen boasts beautiful QUARTZ counters, HUGE ISLAND with under mount sink, STAINLESS STEEL appliances & a huge WALK-IN PANTRY. Upstairs consists of a great size Bonus room, Master Bedroom with 5 pc en-suite & walk in closet. 2 additional bedrooms with 4 pc Bathroom & Laundry. Double Front Garage with Large drive way and lots of street parking. A must see beautiful house, waiting to be yours.

Built in 2022

Essential Information

| | |
|----------------|---------------|
| MLS® # | E4438441 |
| Price | \$529,900 |
| Bedrooms | 3 |
| Bathrooms | 2.50 |
| Full Baths | 2 |
| Half Baths | 1 |
| Square Footage | 1,811 |
| Acres | 0.00 |
| Year Built | 2022 |
| Type | Single Family |



| | |
|----------|------------------------|
| Sub-Type | Detached Single Family |
| Style | 2 Storey |
| Status | Active |

Community Information

| | |
|-------------|------------------|
| Address | 3613 2 Street Nw |
| Area | Edmonton |
| Subdivision | Maple Crest |
| City | Edmonton |
| County | ALBERTA |
| Province | AB |
| Postal Code | T6T 2P9 |

Amenities

| | |
|-----------|--|
| Amenities | Detectors Smoke, No Animal Home, No Smoking Home |
| Parking | Double Garage Attached |

Interior

| | |
|-------------------|--|
| Interior Features | ensuite bathroom |
| Appliances | Dishwasher-Built-In, Dryer, Garage Control, Microwave Hood Fan, Refrigerator, Stove-Electric, Washer, Window Coverings |
| Heating | Forced Air-1, Natural Gas |
| Stories | 2 |
| Has Basement | Yes |
| Basement | Full, Unfinished |

Exterior

| | |
|-------------------|---|
| Exterior | Wood, Stone, Vinyl |
| Exterior Features | Airport Nearby, No Back Lane, Playground Nearby |
| Roof | Asphalt Shingles |
| Construction | Wood, Stone, Vinyl |
| Foundation | Concrete Perimeter |

Additional Information

| | |
|----------------|----------------|
| Date Listed | May 24th, 2025 |
| Days on Market | 23 |
| Zoning | Zone 30 |

DATA IS DEEMED RELIABLE BUT IS NOT GUARANTEED ACCURATE BY THE REALTORS® ASSOCIATION OF EDMONTON. COPYRIGHT 2025 BY THE REALTORS® ASSOCIATION OF EDMONTON. ALL RIGHTS RESERVED. Trademarks are owned or controlled by the Canadian Real Estate Association (CREA) and identify real

estate professionals who are members of CREA (REALTOR®®, REALTORS®®) and/or the quality of services they provide (MLS®®, Multiple Listing Service®®)

Listing information last updated on June 16th, 2025 at 6:32pm MDT