

\$169,900 - 13441 127 Street, Edmonton

MLS® #E4439527

\$169,900

1 Bedroom, 1.00 Bathroom, 809 sqft

Condo / Townhouse on 0.00 Acres

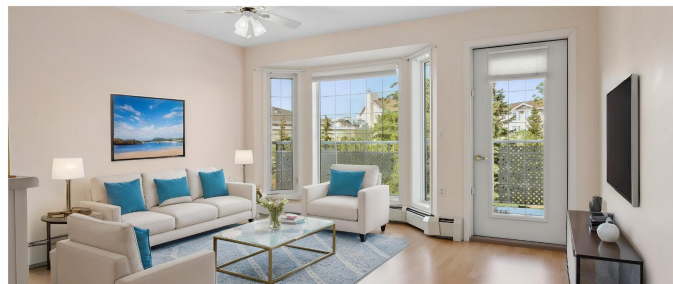
Kensington, Edmonton, AB

Welcome to Shepherd's Place, a friendly 55+ community! This bright and wheelchair-accessible 1-bedroom unit offers an open floor plan with views of the peaceful interior courtyard. The spacious eat-in kitchen features an island and corner pantry. Enjoy a cozy living room with patio doors leading to a large balcony. The bedroom includes two closets and a generous sized bathroom, plus convenient in-suite laundry. The many amenities of this building include private courtyard, restaurant, gift shop, salon, games/social rooms, and beautiful chapel with vibrant church community!! Also, an assigned parking stall is available for \$25/month if needed. Located on a bus route, this well-cared-for unit offers comfort, convenience, and a vibrant lifestyle. Youâ€™ll love calling Shepherdâ€™s Place home! **some photos have been virtually staged.

Built in 1998

Essential Information

MLS® #	E4439527
Price	\$169,900
Bedrooms	1
Bathrooms	1.00
Full Baths	1
Square Footage	809



Acres	0.00
Year Built	1998
Type	Condo / Townhouse
Sub-Type	Lowrise Apartment
Style	Single Level Apartment
Status	Active

Community Information

Address	13441 127 Street
Area	Edmonton
Subdivision	Kensington
City	Edmonton
County	ALBERTA
Province	AB
Postal Code	T5L 5B6

Amenities

Amenities	Intercom, No Animal Home, Parking-Visitor, Party Room, Social Rooms
Parking	No Parking

Interior

Appliances	Dishwasher-Built-In, Dryer, Hood Fan, Refrigerator, Stove-Electric, Washer
Heating	Hot Water, Natural Gas
# of Stories	4
Stories	1
Has Basement	Yes
Basement	None, No Basement

Exterior

Exterior	Wood, Stucco
Exterior Features	Landscaped, Picnic Area, Public Transportation, Shopping Nearby
Roof	Asphalt Shingles
Construction	Wood, Stucco
Foundation	Concrete Perimeter

Additional Information

Date Listed	May 30th, 2025
Days on Market	17

Zoning	Zone 01
Condo Fee	\$509

DATA IS DEEMED RELIABLE BUT IS NOT GUARANTEED ACCURATE BY THE REALTORS® ASSOCIATION OF EDMONTON. COPYRIGHT 2025 BY THE REALTORS® ASSOCIATION OF EDMONTON. ALL RIGHTS RESERVED. Trademarks are owned or controlled by the Canadian Real Estate Association (CREA) and identify real estate professionals who are members of CREA (REALTOR®, REALTORS®) and/or the quality of services they provide (MLS®, Multiple Listing Service®)

Listing information last updated on June 16th, 2025 at 9:47am MDT