

\$973,700 - 4306 Whitelaw Way, Edmonton

MLS® #E4439879

\$973,700

5 Bedroom, 3.50 Bathroom, 2,858 sqft
Single Family on 0.00 Acres

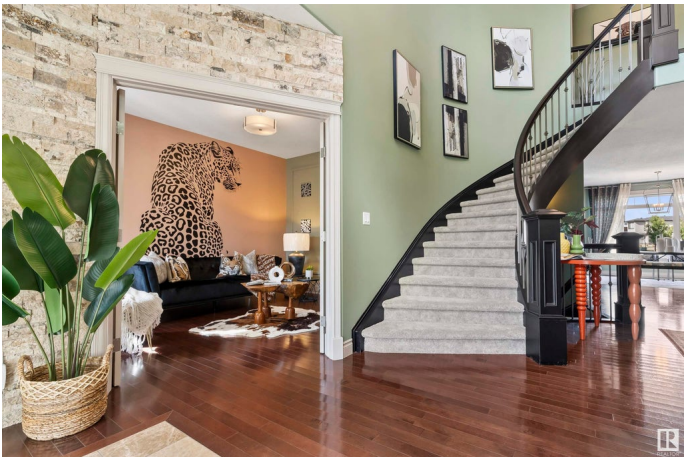
Windermere, Edmonton, AB

Welcome to Windermere, where elegance meets sophistication in this stunning luxury home spanning over 4,000 sq. ft. Step inside to a grand spiral staircase framed by striking stone walls, setting the tone for this exceptional residence. The main floor radiates opulence with a gourmet kitchen, formal dining, breakfast nook, and private office—each enhanced by feature walls, dazzling chandeliers, and designer lighting. The living area opens to a spacious balcony with breathtaking views of trails and a beautifully landscaped yard. Upstairs, a lavish primary suite offers a walk-in closet, spa-inspired ensuite with jetted tub, and heated Montecarlo bath-shower. Two more bedrooms, a full bath, and a large bonus room complete the level. The brand-new walkout basement, nearly 2,000 sq. ft., is bright, expansive, and masterfully finished!

Built in 2011

Essential Information

MLS® #	E4439879
Price	\$973,700
Bedrooms	5
Bathrooms	3.50
Full Baths	3
Half Baths	1



Square Footage	2,858
Acres	0.00
Year Built	2011
Type	Single Family
Sub-Type	Detached Single Family
Style	2 Storey
Status	Active

Community Information

Address	4306 Whitelaw Way
Area	Edmonton
Subdivision	Windermere
City	Edmonton
County	ALBERTA
Province	AB
Postal Code	T6W 0P4

Amenities

Amenities	On Street Parking, Carbon Monoxide Detectors, Ceiling 9 ft., Closet Organizers, Exercise Room, Fire Pit, Front Porch, No Animal Home, No Smoking Home, Walkout Basement, 9 ft. Basement Ceiling
Parking	Double Garage Attached

Interior

Interior Features	ensuite bathroom
Appliances	Dishwasher-Built-In, Dryer, Garage Control, Garage Opener, Hood Fan, Refrigerator, Window Coverings
Heating	Forced Air-2, Natural Gas
Fireplace	Yes
Fireplaces	Double Sided
Stories	3
Has Basement	Yes
Basement	Full, Finished

Exterior

Exterior	Wood, Vinyl
Exterior Features	Fenced, Fruit Trees/Shrubs, Landscaped, Low Maintenance Landscape, Playground Nearby, Schools, Shopping Nearby, See Remarks
Roof	Asphalt Shingles

Construction	Wood, Vinyl
Foundation	Concrete Perimeter

School Information

Elementary	Constable Daniel Woodall
Middle	Riverbend School
High	Lillian Osborne School

Additional Information

Date Listed	June 2nd, 2025
Days on Market	5
Zoning	Zone 56
HOA Fees	160
HOA Fees Freq.	Annually

DATA IS DEEMED RELIABLE BUT IS NOT GUARANTEED ACCURATE BY THE REALTORS® ASSOCIATION OF EDMONTON. COPYRIGHT 2025 BY THE REALTORS® ASSOCIATION OF EDMONTON. ALL RIGHTS RESERVED.Trademarks are owned or controlled by the Canadian Real Estate Association (CREA) and identify real estate professionals who are members of CREA (REALTOR®, REALTORS®) and/or the quality of services they provide (MLS®, Multiple Listing Service®)

Listing information last updated on June 7th, 2025 at 6:32am MDT