

\$549,900 - 9132 67 Avenue, Edmonton

MLS® #E4442884

\$549,900

2 Bedroom, 3.00 Bathroom, 1,194 sqft

Single Family on 0.00 Acres

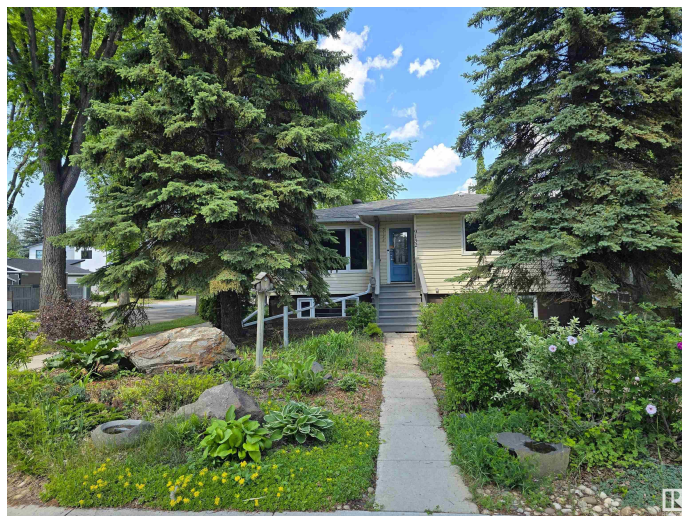
Hazeldean, Edmonton, AB

Stunning Raised Bungalow Steps to Mill Creek Ravine, in the heart of Hazeldean, on a Massive 5,891 SF Corner Lot! Rarely offered in this prime location, this 5 bedroom, 3 bath home offers style, space. The open-concept main floor features a bright living room with gas fireplace & hardwood flooring, a spacious dining area, and a modern kitchen with maple cabinets. The HUGE primary suite includes dual closets & a 4 pc ensuite. Rounding out the main floor is a 2nd bedroom, & an additional 3 pc bath. Downstairs you'll find a large recreation room with big windows, 3 additional bedrooms, & a 3 pc bath. Enjoy beautifully landscaped, low-maintenance yard with a large patio. Double detached garage with private driveway. Steps to Mill Creek Ravine, walking trails, schools, parks, transit, shops & more! This is a gem in a dream location!

Built in 1957

Essential Information

MLS® #	E4442884
Price	\$549,900
Bedrooms	2
Bathrooms	3.00
Full Baths	3
Square Footage	1,194



Acres	0.00
Year Built	1957
Type	Single Family
Sub-Type	Detached Single Family
Style	Bungalow
Status	Active

Community Information

Address	9132 67 Avenue
Area	Edmonton
Subdivision	Hazeldean
City	Edmonton
County	ALBERTA
Province	AB
Postal Code	T6E 0N3

Amenities

Amenities	Patio, Vinyl Windows, See Remarks
Parking Spaces	4
Parking	Double Garage Detached

Interior

Interior Features	ensuite bathroom
Appliances	Dishwasher-Built-In, Dryer, Garage Control, Garage Opener, Oven-Built-In, Oven-Microwave, Refrigerator, Stove-Countertop Electric, Washer, Window Coverings
Heating	Forced Air-1, Natural Gas
Fireplace	Yes
Fireplaces	Mantel, Tile Surround
Stories	2
Has Basement	Yes
Basement	Full, Finished

Exterior

Exterior	Wood, Vinyl
Exterior Features	Back Lane, Corner Lot, Cul-De-Sac, Fenced, Flat Site, Landscaped, Park/Reserve, Paved Lane, Playground Nearby, Private Setting, Ravine View, Schools, Shopping Nearby
Roof	Asphalt Shingles

Construction	Wood, Vinyl
Foundation	Concrete Perimeter

School Information

Elementary	St James/Hazeldean
Middle	JH Picard/Ottewell
High	Strathcona/O'Brien

Additional Information

Date Listed	June 18th, 2025
Days on Market	5
Zoning	Zone 17

DATA IS DEEMED RELIABLE BUT IS NOT GUARANTEED ACCURATE BY THE REALTORS® ASSOCIATION OF EDMONTON. COPYRIGHT 2025 BY THE REALTORS® ASSOCIATION OF EDMONTON. ALL RIGHTS RESERVED.Trademarks are owned or controlled by the Canadian Real Estate Association (CREA) and identify real estate professionals who are members of CREA (REALTOR®, REALTORS®) and/or the quality of services they provide (MLS®, Multiple Listing Service®)

Listing information last updated on June 23rd, 2025 at 12:47am MDT