

\$450,000 - 9015 135a Avenue, Edmonton

MLS® #E4444881

\$450,000

4 Bedroom, 2.00 Bathroom, 1,006 sqft

Single Family on 0.00 Acres

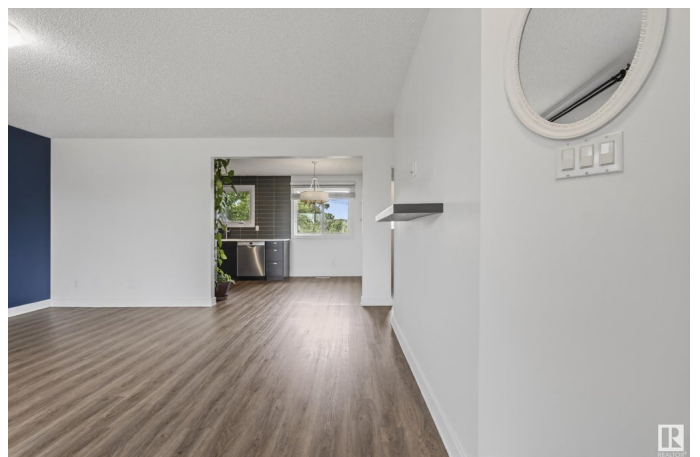
Glengarry, Edmonton, AB

South facing backyardâ€™s extensively renovated throughout! This charming 4-bedroom bungalow has everything on your wish list. Freshly painted in modern colors, the main floor features upgraded laminate flooring that adds warmth to the bright, open-concept layout. The sleek kitchen boasts quartz countertops, new stainless steel appliances, double sink, pot & pan drawers, and soft-close cabinetry. Three bedrooms and a 4-piece porcelain-tiled bath complete the main level. The finished basement offers new carpeting, a huge rec room, 4th bedroom, 4-piece bath, and laundry with new front-loading washer and dryer. An oversized single garage complements the huge lot with a fence (2018). Additional updates include newer windows, doors, lighting, siding, furnace, newer hot water tank (2021), shingles (2018), front step (2022), plus floor and dishwasher replaced last year. Move-in ready with every detail thoughtfully cared for!

Built in 1962

Essential Information

| | |
|-----------|-----------|
| MLS® # | E4444881 |
| Price | \$450,000 |
| Bedrooms | 4 |
| Bathrooms | 2.00 |



| | |
|----------------|------------------------|
| Full Baths | 2 |
| Square Footage | 1,006 |
| Acres | 0.00 |
| Year Built | 1962 |
| Type | Single Family |
| Sub-Type | Detached Single Family |
| Style | Bungalow |
| Status | Active |

Community Information

| | |
|-------------|------------------|
| Address | 9015 135a Avenue |
| Area | Edmonton |
| Subdivision | Glengarry |
| City | Edmonton |
| County | ALBERTA |
| Province | AB |
| Postal Code | T5E 1S2 |

Amenities

| | |
|-----------|------------------------------------|
| Amenities | See Remarks |
| Parking | Over Sized, Single Garage Detached |

Interior

| | |
|--------------|--|
| Appliances | Dishwasher-Built-In, Dryer, Garage Control, Hood Fan, Refrigerator, Stove-Electric, Washer |
| Heating | Forced Air-1, Natural Gas |
| Stories | 2 |
| Has Basement | Yes |
| Basement | Full, Finished |

Exterior

| | |
|-------------------|--|
| Exterior | Wood, Vinyl |
| Exterior Features | Fenced, Park/Reserve, Playground Nearby, Public Transportation, Schools, Shopping Nearby |
| Roof | Asphalt Shingles |
| Construction | Wood, Vinyl |
| Foundation | Concrete Perimeter |

Additional Information

Date Listed June 27th, 2025

Days on Market 4

Zoning Zone 02

DATA IS DEEMED RELIABLE BUT IS NOT GUARANTEED ACCURATE BY THE REALTORS® ASSOCIATION OF EDMONTON. COPYRIGHT 2025 BY THE REALTORS® ASSOCIATION OF EDMONTON. ALL RIGHTS RESERVED. Trademarks are owned or controlled by the Canadian Real Estate Association (CREA) and identify real estate professionals who are members of CREA (REALTOR®, REALTORS®) and/or the quality of services they provide (MLS®, Multiple Listing Service®)

Listing information last updated on July 1st, 2025 at 1:32am MDT