

## \$529,900 - 7281 Morgan Road, Edmonton

MLS® #E4445353

**\$529,900**

3 Bedroom, 2.50 Bathroom, 1,505 sqft

Single Family on 0.00 Acres

Griesbach, Edmonton, AB

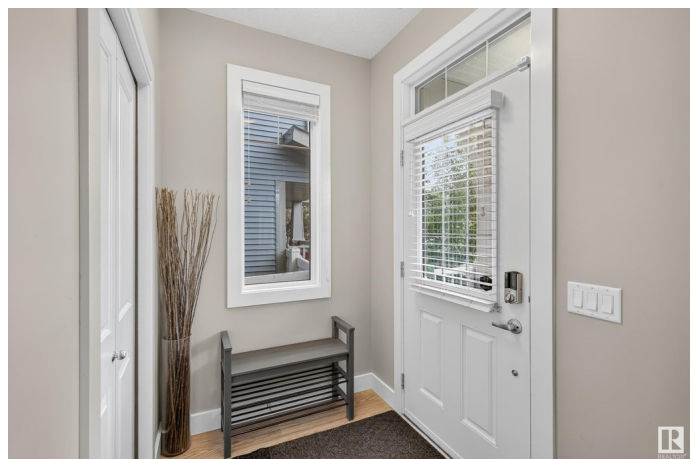
Welcome to this beautifully maintained 2-storey in the sought-after community of Griesbach. From the moment you arrive, youâ€™re greeted by stunning curb appeal and a spacious front veranda that sets the tone. Step into an inviting open-concept layout, ideal for both everyday living & effortless entertaining. The cozy living room features a gas fireplace & large windows flooding the space with natural light. The kitchen boasts stainless steel appliances, quartz countertops, and a center island perfect for casual meals or morning coffee â€“ all flowing into a bright dining area. Upstairs, discover 3 bedrooms, including a primary retreat complete with an organized walk-in closet & private ensuite. Convenience is key with an upper-floor washer & dryer. Enjoy the outdoors with low-maintenance landscaping, a composite back deck for summer gatherings, & a fully insulated & drywalled double detached garage, offering ample storage. This home is also equipped with a A/C, to keep cool during the warm summer days.

Built in 2015

### Essential Information

MLS® # E4445353

Price \$529,900



Bedrooms	3
Bathrooms	2.50
Full Baths	2
Half Baths	1
Square Footage	1,505
Acres	0.00
Year Built	2015
Type	Single Family
Sub-Type	Detached Single Family
Style	2 Storey
Status	Active

### Community Information

Address	7281 Morgan Road
Area	Edmonton
Subdivision	Griesbach
City	Edmonton
County	ALBERTA
Province	AB
Postal Code	T5E 6V7

### Amenities

Amenities	See Remarks
Parking	Double Garage Attached

### Interior

Interior Features	ensuite bathroom
Appliances	Dishwasher-Built-In, Dryer, Garage Control, Garage Opener, Hood Fan, Refrigerator, Stove-Electric, Washer, Window Coverings
Heating	Forced Air-1, Natural Gas
Stories	2
Has Basement	Yes
Basement	Full, Partially Finished

### Exterior

Exterior	Wood, Stone, Vinyl
Exterior Features	See Remarks
Roof	Asphalt Shingles
Construction	Wood, Stone, Vinyl

Foundation                      Concrete Perimeter

**Additional Information**

Date Listed                      July 2nd, 2025

Days on Market                20

Zoning                              Zone 27

DATA IS DEEMED RELIABLE BUT IS NOT GUARANTEED ACCURATE BY THE REALTORS® ASSOCIATION OF EDMONTON. COPYRIGHT 2025 BY THE REALTORS® ASSOCIATION OF EDMONTON. ALL RIGHTS RESERVED.Trademarks are owned or controlled by the Canadian Real Estate Association (CREA) and identify real estate professionals who are members of CREA (REALTOR®, REALTORS®) and/or the quality of services they provide (MLS®, Multiple Listing Service®)

Listing information last updated on July 22nd, 2025 at 8:32pm MDT