

\$499,900 - 1520 80a Street, Edmonton

MLS® #E4445520

\$499,900

4 Bedroom, 3.00 Bathroom, 1,551 sqft

Single Family on 0.00 Acres

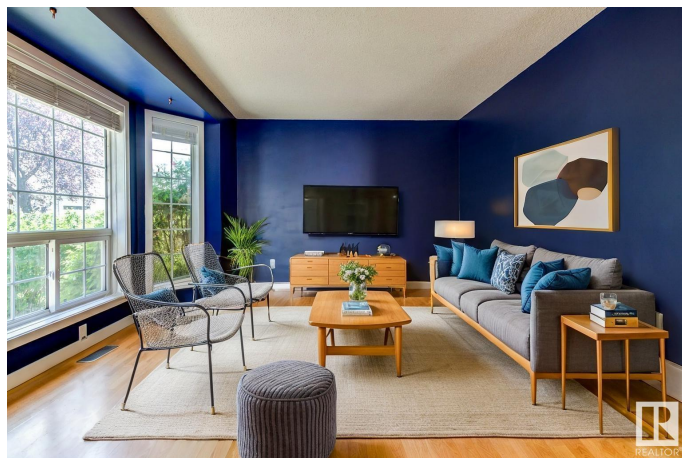
Satoo, Edmonton, AB

Finally, space to grow into â€” not out of. This updated 5-level split offers over 2,000 sq ft of finished living space designed for real life: 4 bedrooms, 3 full baths, a bright living room with big bay windows, and a dining room ready for holiday dinners. The kitchen is crisp and fresh with subway tile and stainless finishes. Head downstairs to a huge family room with fireplace and walkout to a South West facing backyard youâ€™™ll actually use: fruit trees, fresh fencing, greenspace, epic sun tanning and no neighbours behind. Thereâ€™™s a private lower level with a guest room, new bathroom, bonus living space, and storage youâ€™™ll actually love. Newer furnace, AC, and an oversized double garage check the last boxes. Tucked on a quiet street in Satoo, steps from parks and trails â€” this is the one that makes moving feel easy.

Built in 1993

Essential Information

MLS® #	E4445520
Price	\$499,900
Bedrooms	4
Bathrooms	3.00
Full Baths	3
Square Footage	1,551
Acres	0.00



Year Built	1993
Type	Single Family
Sub-Type	Detached Single Family
Style	5 Level Split
Status	Active

Community Information

Address	1520 80a Street
Area	Edmonton
Subdivision	Satoo
City	Edmonton
County	ALBERTA
Province	AB
Postal Code	T6K 4E2

Amenities

Amenities	Air Conditioner, Closet Organizers, Crawl Space, Deck, Exterior Walls-2"x6", Smart/Program. Thermostat, Vinyl Windows
Parking Spaces	4
Parking	Double Garage Detached

Interior

Interior Features	ensuite bathroom
Appliances	Air Conditioning-Central, Dishwasher-Built-In, Dryer, Microwave Hood Fan, Refrigerator, Stove-Electric, Vacuum Systems, Washer, Window Coverings
Heating	Forced Air-1, Natural Gas
Fireplace	Yes
Fireplaces	Stone Facing
Stories	4
Has Basement	Yes
Basement	Full, Finished

Exterior

Exterior	Wood, Vinyl
Exterior Features	Backs Onto Park/Trees, Fenced, Fruit Trees/Shrubs, Golf Nearby, Landscaped, Level Land, Low Maintenance Landscape, Picnic Area, Playground Nearby, Public Transportation, Schools, Shopping Nearby
Roof	Asphalt Shingles
Construction	Wood, Vinyl

Foundation Concrete Perimeter

Additional Information

Date Listed July 3rd, 2025

Days on Market 8

Zoning Zone 29

DATA IS DEEMED RELIABLE BUT IS NOT GUARANTEED ACCURATE BY THE REALTORS® ASSOCIATION OF EDMONTON. COPYRIGHT 2025 BY THE REALTORS® ASSOCIATION OF EDMONTON. ALL RIGHTS RESERVED.Trademarks are owned or controlled by the Canadian Real Estate Association (CREA) and identify real estate professionals who are members of CREA (REALTOR®, REALTORS®) and/or the quality of services they provide (MLS®, Multiple Listing Service®)

Listing information last updated on July 10th, 2025 at 11:32pm MDT