

Courtesy Of Robby Halabi Of Rimrock Real Estate

# \$589,999 - 900 10180 103 Street, Edmonton

MLS® #E4445662

**\$589,999**

2 Bedroom, 2.00 Bathroom, 1,354 sqft  
Condo / Townhouse on 0.00 Acres

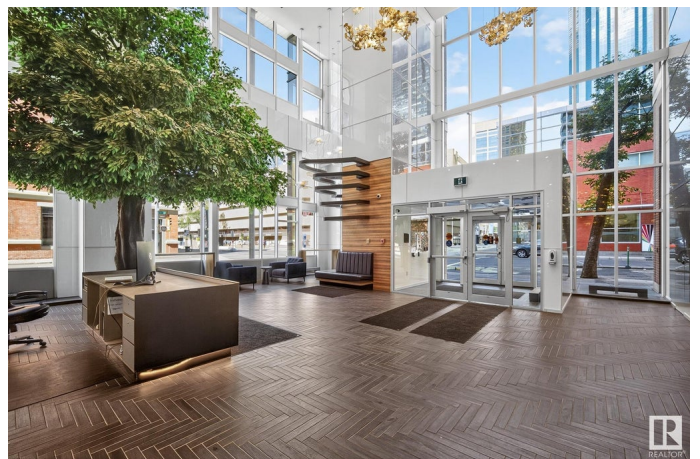
Downtown (Edmonton), Edmonton, AB

Experience luxury condo living at The Encore Tower – Edmonton™'s premier high-rise address! This sleek and modern 9th-floor unit offers 180° views of the downtown skyline through stunning floor-to-ceiling windows. Designed for upscale urban lifestyles, it features 2 bedrooms, 2 full baths, a chef™'s kitchen with quartz countertops & stainless steel appliances, and 2 private balconies. The spacious primary suite boasts a lavish 5-piece en suite and custom California Closets wardrobe. Enjoy top-tier amenities including a social lounge, fitness centre, outdoor patio, and secure underground titled parking. Ideal for professionals, downsizers, or those seeking elevated city living located just steps from Edmonton™'s thriving Ice District, Roger's Place Arena, downtown's finest restaurants, and top amenities – this is downtown living at its finest!

Built in 2020

## Essential Information

MLS® #	E4445662
Price	\$589,999
Bedrooms	2
Bathrooms	2.00
Full Baths	2
Square Footage	1,354



Acres	0.00
Year Built	2020
Type	Condo / Townhouse
Sub-Type	Apartment High Rise
Style	Single Level Apartment
Status	Active

### **Community Information**

Address	900 10180 103 Street
Area	Edmonton
Subdivision	Downtown (Edmonton)
City	Edmonton
County	ALBERTA
Province	AB
Postal Code	T5J 0L1

### **Amenities**

Amenities	Air Conditioner, Ceiling 9 ft., Exercise Room, Hot Tub, Social Rooms, Concierge Service
Parking Spaces	1
Parking	Heated, Parkade, Underground

### **Interior**

Interior Features	ensuite bathroom
Appliances	Dryer, Microwave Hood Fan, Refrigerator, Stove-Electric, Washer, Window Coverings
Heating	Heat Pump, Natural Gas
# of Stories	43
Stories	1
Has Basement	Yes
Basement	None, No Basement

### **Exterior**

Exterior	Concrete, Brick, Metal
Exterior Features	Golf Nearby, Public Transportation, Schools, Shopping Nearby, View City, View Downtown
Roof	EPDM Membrane
Construction	Concrete, Brick, Metal
Foundation	Concrete Perimeter

## Additional Information

Date Listed	July 2nd, 2025
Days on Market	56
Zoning	Zone 12
Condo Fee	\$1,080

DATA IS DEEMED RELIABLE BUT IS NOT GUARANTEED ACCURATE BY THE REALTORS® ASSOCIATION OF EDMONTON. COPYRIGHT 2025 BY THE REALTORS® ASSOCIATION OF EDMONTON. ALL RIGHTS RESERVED. Trademarks are owned or controlled by the Canadian Real Estate Association (CREA) and identify real estate professionals who are members of CREA (REALTOR®, REALTORS®) and/or the quality of services they provide (MLS®, Multiple Listing Service®)

Listing information last updated on August 27th, 2025 at 1:47pm MDT