

\$580,000 - 1027 Graham Court, Edmonton

MLS® #E4445947

\$580,000

4 Bedroom, 3.50 Bathroom, 1,958 sqft

Single Family on 0.00 Acres

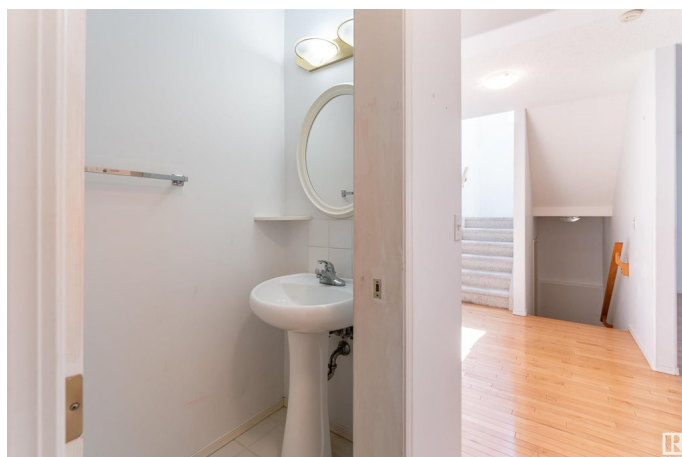
Glastonbury, Edmonton, AB

Welcome to this bright freshly painted 4 bed, 3.5 bath home in Glastonbury! With 1,958 sq. ft., this lovely home backs onto a peaceful park for extra privacy. The airy living room features a tile surround gas fireplace, and the spacious kitchen and dining area flow nicely out to the deck – perfect for family BBQs. Upstairs has 3 generous bedrooms, including a primary with walk-in closet and 3pc ensuite, plus another full bath. The fully finished WALK-OUT BASEMENT adds even more space with a huge rec room, a 4th bedroom, utility room, and 3pc bath. Enjoy a fenced backyard and a double attached garage for convenience. Great location near playgrounds, schools, public transit, and shopping – everything you need is close by!

Built in 2001

Essential Information

MLS® #	E4445947
Price	\$580,000
Bedrooms	4
Bathrooms	3.50
Full Baths	3
Half Baths	1
Square Footage	1,958
Acres	0.00



Year Built	2001
Type	Single Family
Sub-Type	Detached Single Family
Style	2 Storey
Status	Active

Community Information

Address	1027 Graham Court
Area	Edmonton
Subdivision	Glastonbury
City	Edmonton
County	ALBERTA
Province	AB
Postal Code	T5T 6L4

Amenities

Amenities	Detectors Smoke, No Animal Home, No Smoking Home, Walkout Basement
Parking Spaces	4
Parking	Double Garage Attached

Interior

Interior Features	ensuite bathroom
Appliances	Dishwasher-Built-In, Dryer, Freezer, Microwave Hood Fan, Refrigerator, Storage Shed, Stove-Electric, Washer, Window Coverings
Heating	Forced Air-1, Natural Gas
Fireplace	Yes
Fireplaces	Tile Surround
Stories	3
Has Basement	Yes
Basement	Full, Finished

Exterior

Exterior	Wood, Vinyl
Exterior Features	Playground Nearby, Public Transportation, Schools, Shopping Nearby
Roof	Asphalt Shingles
Construction	Wood, Vinyl
Foundation	Concrete Perimeter

Additional Information

Date Listed July 4th, 2025

Days on Market 66

Zoning Zone 58

DATA IS DEEMED RELIABLE BUT IS NOT GUARANTEED ACCURATE BY THE REALTORS® ASSOCIATION OF EDMONTON. COPYRIGHT 2025 BY THE REALTORS® ASSOCIATION OF EDMONTON. ALL RIGHTS RESERVED. Trademarks are owned or controlled by the Canadian Real Estate Association (CREA) and identify real estate professionals who are members of CREA (REALTOR®, REALTORS®) and/or the quality of services they provide (MLS®, Multiple Listing Service®)

Listing information last updated on September 8th, 2025 at 12:47am MDT