

\$290,000 - 132 11603 Ellerslie Road, Edmonton

MLS® #E4447483

\$290,000

2 Bedroom, 2.00 Bathroom, 1,095 sqft

Condo / Townhouse on 0.00 Acres

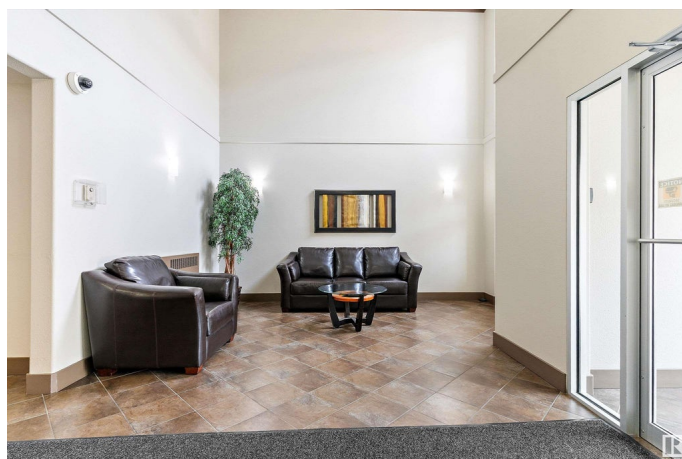
Rutherford (Edmonton), Edmonton, AB

Welcome to Rutherford Gates! This spacious 2 bed, 2 bath corner unit offers over 1,090 sq ft of stylish living. Ideally located off Ellerslie Rd, close to shopping, transit, and under 15 mins to the airport. The open-concept layout features a modern kitchen with a large island and a window above the sink that brings in natural light. The living room offers a cozy gas fireplace and large windows. Bedrooms are well-separated for privacy, with the primary suite featuring a private 3-pc ensuite. Enjoy a large wraparound balcony, a sizeable laundry room, titled underground parking with a storage cage, and access to the building's fitness room. This well-managed complex offers a welcoming lobby, social room, and beautifully landscaped grounds. With its ideal layout, premium corner location, and fantastic amenities, this home checks all the boxes, whether you're a first-time buyer, downsizer, or investor!

Built in 2007

Essential Information

MLS® #	E4447483
Price	\$290,000
Bedrooms	2
Bathrooms	2.00
Full Baths	2



Square Footage	1,095
Acres	0.00
Year Built	2007
Type	Condo / Townhouse
Sub-Type	Lowrise Apartment
Style	Single Level Apartment
Status	Active

Community Information

Address	132 11603 Ellerslie Road
Area	Edmonton
Subdivision	Rutherford (Edmonton)
City	Edmonton
County	ALBERTA
Province	AB
Postal Code	T6W 0J3

Amenities

Amenities	Exercise Room, Parking-Extra, Parking-Visitor, Patio, Sprinkler System-Fire, See Remarks, Storage Cage
Parking Spaces	1
Parking	Underground

Interior

Interior Features	ensuite bathroom
Appliances	Dryer, Microwave Hood Fan, Refrigerator, Stove-Electric, Washer, Window Coverings
Heating	Hot Water, Natural Gas
Fireplace	Yes
Fireplaces	Mantel
# of Stories	4
Stories	1
Has Basement	Yes
Basement	None, No Basement

Exterior

Exterior	Wood, Vinyl
Exterior Features	Airport Nearby, Playground Nearby, Public Transportation, Schools, Shopping Nearby, See Remarks

Roof	Asphalt Shingles
Construction	Wood, Vinyl
Foundation	Concrete Perimeter

Additional Information

Date Listed	July 12th, 2025
Days on Market	57
Zoning	Zone 55
Condo Fee	\$701

DATA IS DEEMED RELIABLE BUT IS NOT GUARANTEED ACCURATE BY THE REALTORS® ASSOCIATION OF EDMONTON. COPYRIGHT 2025 BY THE REALTORS® ASSOCIATION OF EDMONTON. ALL RIGHTS RESERVED.Trademarks are owned or controlled by the Canadian Real Estate Association (CREA) and identify real estate professionals who are members of CREA (REALTOR®, REALTORS®) and/or the quality of services they provide (MLS®, Multiple Listing Service®)

Listing information last updated on September 7th, 2025 at 2:02pm MDT