

# \$644,886 - 4635 Kinsella Landing, Edmonton

MLS® #E4447995

**\$644,886**

4 Bedroom, 2.50 Bathroom, 1,903 sqft  
Single Family on 0.00 Acres

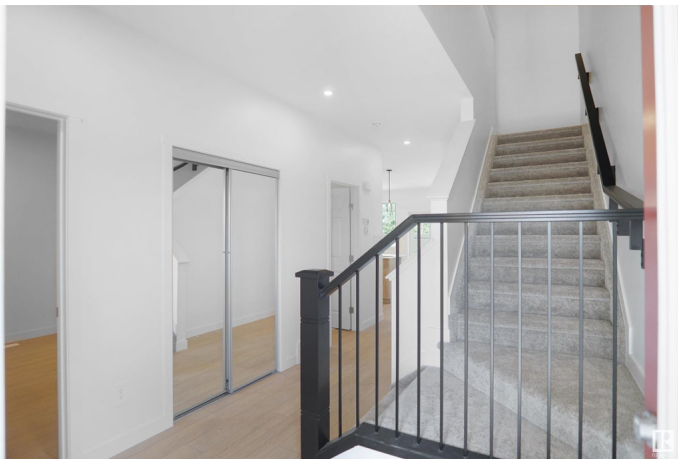
Keswick Area, Edmonton, AB

Welcome to the "Willow" built by the award-winning builder Pacesetter homes and is located in the heart Keswick Landing and just steps to the walking trails and parks. As you enter the home you are greeted by luxury vinyl plank flooring throughout the great room, kitchen, and the breakfast nook. Your large kitchen features tile back splash, an island a flush eating bar, quartz counter tops and an undermount sink. Just off of the kitchen and tucked away by the front entry is a 2 piece bathroom. Upstairs is the primary retreat with a large walk in closet and a 4-piece en-suite. The second level also include 3 additional bedrooms with a conveniently placed main 4-piece bathroom and a good sized bonus room. The unspoiled basement has a side separate entrance and larger then average windows perfect for a future suite. \*\*\* This home is under construction and the photos used are from a previous similar home, the colors and finishings may vary , should be complete by March 2026 \*\*\*

Built in 2025

## Essential Information

|          |           |
|----------|-----------|
| MLS® #   | E4447995  |
| Price    | \$644,886 |
| Bedrooms | 4         |



|                |                        |
|----------------|------------------------|
| Bathrooms      | 2.50                   |
| Full Baths     | 2                      |
| Half Baths     | 1                      |
| Square Footage | 1,903                  |
| Acres          | 0.00                   |
| Year Built     | 2025                   |
| Type           | Single Family          |
| Sub-Type       | Detached Single Family |
| Style          | 2 Storey               |
| Status         | Active                 |

### Community Information

|             |                       |
|-------------|-----------------------|
| Address     | 4635 Kinsella Landing |
| Area        | Edmonton              |
| Subdivision | Keswick Area          |
| City        | Edmonton              |
| County      | ALBERTA               |
| Province    | AB                    |
| Postal Code | T6W 5G9               |

### Amenities

|           |                        |
|-----------|------------------------|
| Amenities | See Remarks            |
| Parking   | Double Garage Attached |

### Interior

|                   |                               |
|-------------------|-------------------------------|
| Interior Features | ensuite bathroom              |
| Appliances        | Garage Control, Garage Opener |
| Heating           | Forced Air-1, Natural Gas     |
| Stories           | 2                             |
| Has Basement      | Yes                           |
| Basement          | Full, Unfinished              |

### Exterior

|                   |  |
|-------------------|--|
| Exterior          | Wood, Stone, Vinyl   |
| Exterior Features | Airport Nearby, Golf Nearby, Park/Reserve, Playground Nearby, Public Swimming Pool, Public Transportation, Schools, Shopping Nearby, See Remarks |
| Roof              | Asphalt Shingles   |
| Construction      | Wood, Stone, Vinyl   |

Foundation                      Concrete Perimeter

**Additional Information**

Date Listed                      July 15th, 2025

Days on Market                57

Zoning                              Zone 56

DATA IS DEEMED RELIABLE BUT IS NOT GUARANTEED ACCURATE BY THE REALTORS® ASSOCIATION OF EDMONTON. COPYRIGHT 2025 BY THE REALTORS® ASSOCIATION OF EDMONTON. ALL RIGHTS RESERVED.Trademarks are owned or controlled by the Canadian Real Estate Association (CREA) and identify real estate professionals who are members of CREA (REALTOR®, REALTORS®) and/or the quality of services they provide (MLS®, Multiple Listing Service®)

Listing information last updated on September 10th, 2025 at 3:02pm MDT