

\$549,900 - 4208 162 Avenue, Edmonton

MLS® #E4448332

\$549,900

3 Bedroom, 2.50 Bathroom, 2,087 sqft

Single Family on 0.00 Acres

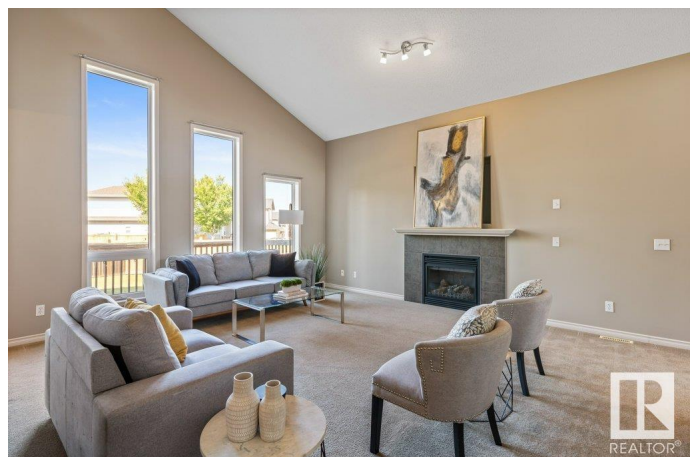
Brintnell, Edmonton, AB

Stunning 2,086 sq. ft. two-storey on a MASSIVE PIE SHAPED lot in a quiet Brintnell cul-de-sac! This ideal family home features a spacious kitchen with a large island, tile backsplash, stainless steel appliances, and a corner pantryâ€”perfect for cooking and entertaining. The open-concept great room offers a cozy gas fireplace and large windows that flood the space with natural light. A front flex room makes an excellent home office or playroom. The generous dining area has patio doors leading to a deck and an expansive backyardâ€”ideal for family fun and summer BBQs! Upstairs, youâ€™™ll find three well-sized bedrooms, including a luxurious primary suite with a 5-piece ensuite, soaker tub, and walk-in closet. This must-see home is in a fantastic location close to schools, shopping, and easy access to Anthony Henday. The massive yard is perfect for kids to play and grow!

Built in 2007

Essential Information

MLS® #	E4448332
Price	\$549,900
Bedrooms	3
Bathrooms	2.50
Full Baths	2
Half Baths	1



Square Footage	2,087
Acres	0.00
Year Built	2007
Type	Single Family
Sub-Type	Detached Single Family
Style	2 Storey
Status	Active

Community Information

Address	4208 162 Avenue
Area	Edmonton
Subdivision	Brintnell
City	Edmonton
County	ALBERTA
Province	AB
Postal Code	T5Y 0H8

Amenities

Amenities	Deck
Parking	Double Garage Attached

Interior

Interior Features	ensuite bathroom
Appliances	Dishwasher-Built-In, Dryer, Hood Fan, Oven-Microwave, Refrigerator, Stove-Electric, Washer
Heating	Forced Air-1, Natural Gas
Stories	2
Has Basement	Yes
Basement	Full, Unfinished

Exterior

Exterior	Wood, Vinyl
Exterior Features	Cul-De-Sac, Fenced, Flat Site, Landscaped, Public Transportation, Schools, Shopping Nearby
Roof	Asphalt Shingles
Construction	Wood, Vinyl
Foundation	Concrete Perimeter

Additional Information

Date Listed July 17th, 2025

Days on Market 8

Zoning Zone 03

DATA IS DEEMED RELIABLE BUT IS NOT GUARANTEED ACCURATE BY THE REALTORS® ASSOCIATION OF EDMONTON. COPYRIGHT 2025 BY THE REALTORS® ASSOCIATION OF EDMONTON. ALL RIGHTS RESERVED. Trademarks are owned or controlled by the Canadian Real Estate Association (CREA) and identify real estate professionals who are members of CREA (REALTOR®, REALTORS®) and/or the quality of services they provide (MLS®, Multiple Listing Service®)

Listing information last updated on July 25th, 2025 at 7:17pm MDT