

\$819,000 - 1142 Gyrfalcon Crescent, Edmonton

MLS® #E4448605

\$819,000

4 Bedroom, 4.00 Bathroom, 2,580 sqft

Single Family on 0.00 Acres

Hawks Ridge, Edmonton, AB

Welcome to this stunning, fully upgraded custom-built home in Hawks Ridge, nestled beside Big Lake and Lois Hole Provincial Park. Surrounded by over 105 acres of preserved natural beauty with mature trees, scenic ponds, wetlands, and endless walking trails, this location offers a perfect balance of nature and urban convenience with quick access to shopping, recreation, and all lifestyle amenities. This home boasts nearly 2,600 sq.ft. of thoughtfully designed living space featuring a main floor den with a full 3-pc bath—ideal for guests or home office—an open-to-above living room with soaring ceilings, a spacious kitchen with walkthrough pantry, and 10'™ ceilings throughout the main. The side entrance to the basement offers future suite potential. Upstairs includes 4 spacious bedrooms, a versatile bonus room, and 3 full bathrooms. The luxurious primary suite impresses with coffered ceilings and a large walk-in closet. Ready for possession in June 2025—this one is not to be missed!

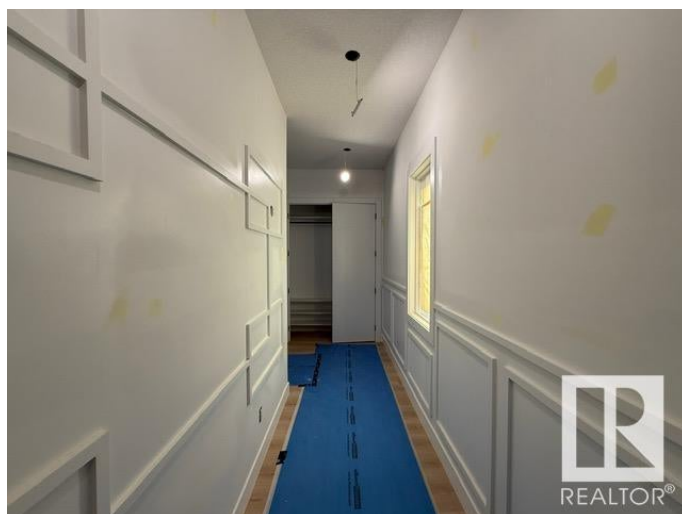
Built in 2025

Essential Information

MLS® # E4448605

Price \$819,000

Bedrooms 4



Bathrooms	4.00
Full Baths	4
Square Footage	2,580
Acres	0.00
Year Built	2025
Type	Single Family
Sub-Type	Detached Single Family
Style	2 Storey
Status	Active

Community Information

Address	1142 Gyrfalcon Crescent
Area	Edmonton
Subdivision	Hawks Ridge
City	Edmonton
County	ALBERTA
Province	AB
Postal Code	T5S 0S5

Amenities

Amenities	Ceiling 10 ft., Secured Parking, HRV System
Parking	Double Garage Attached
Is Waterfront	Yes

Interior

Interior Features	ensuite bathroom
Appliances	See Remarks
Heating	Forced Air-1, Natural Gas
Fireplace	Yes
Fireplaces	Glass Door
Stories	2
Has Basement	Yes
Basement	Full, Unfinished

Exterior

Exterior	Wood, Stone, Vinyl
Exterior Features	Creek, Park/Reserve, Schools, Shopping Nearby, See Remarks
Roof	Asphalt Shingles
Construction	Wood, Stone, Vinyl

Foundation Concrete Perimeter

School Information

Elementary DAVID THOMAS SCHOOL
Middle DAVID THOMAS SCHOOL
High JASPER PLACE SCHOOL

Additional Information

Date Listed July 18th, 2025
Days on Market 8
Zoning Zone 59

DATA IS DEEMED RELIABLE BUT IS NOT GUARANTEED ACCURATE BY THE REALTORS® ASSOCIATION OF EDMONTON. COPYRIGHT 2025 BY THE REALTORS® ASSOCIATION OF EDMONTON. ALL RIGHTS RESERVED.Trademarks are owned or controlled by the Canadian Real Estate Association (CREA) and identify real estate professionals who are members of CREA (REALTOR®, REALTORS®) and/or the quality of services they provide (MLS®, Multiple Listing Service®)
Listing information last updated on July 26th, 2025 at 6:02am MDT