

## \$625,000 - 7024 105a Street, Edmonton

MLS® #E4453295

**\$625,000**

3 Bedroom, 1.00 Bathroom, 1,188 sqft

Single Family on 0.00 Acres

Queen Alexandra, Edmonton, AB

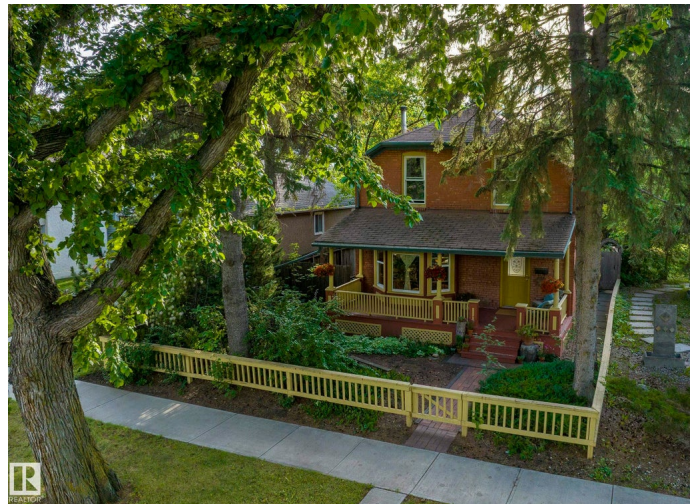
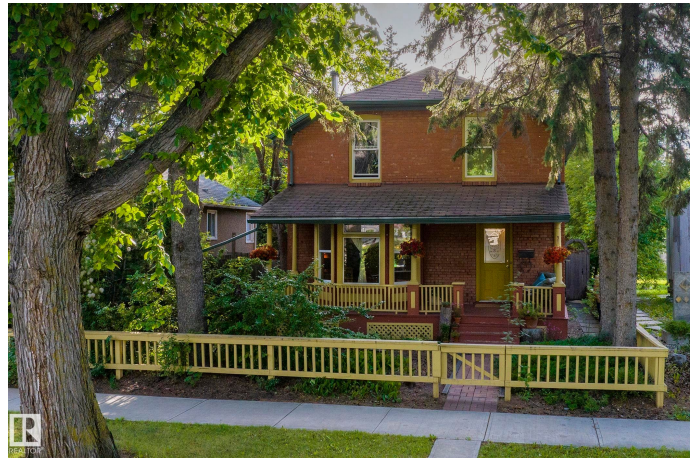
A RARE OPPORTUNITY to own part of Edmonton's history and potentially qualify for a City grant up to \$100,000. Straight out of a home design magazine, the rustic elegance of this beautiful, solid, structural brick home, is an expertly curated blend of modern updates and historic preservation. The walls have been re-plastered by European craftspeople using natural earth pigments. The heart of the home is a chic, charming kitchen featuring an iconic AGA cooker, handmade Moroccan tile backsplash, and soapstone counters. The original fir wood floors, doors, window frames, and baseboards, have been stripped and restored to their natural state. The open-plan living and dining areas feature a cozy cast iron wood burning stove, creating a warm and inviting space. Enjoy the quiet, tree-lined street from your idyllic front porch. The bright, lime-plaster finished basement has walk-out access to a patio and mature, secluded garden. The single car garage could be developed into a larger garage and/or garden suite.

Built in 1910

### Essential Information

MLS® # E4453295

Price \$625,000



Bedrooms	3
Bathrooms	1.00
Full Baths	1
Square Footage	1,188
Acres	0.00
Year Built	1910
Type	Single Family
Sub-Type	Detached Single Family
Style	2 Storey
Status	Active

### Community Information

Address	7024 105a Street
Area	Edmonton
Subdivision	Queen Alexandra
City	Edmonton
County	ALBERTA
Province	AB
Postal Code	T6H 2R5

### Amenities

Amenities	Hot Water Natural Gas, Skylight
Parking	Rear Drive Access, Single Garage Detached

### Interior

Appliances	Dryer, Garage Opener, Refrigerator, Stove-Gas, Washer
Heating	Forced Air-1, Wood Stove, Natural Gas, Wood
Stories	2
Has Basement	Yes
Basement	Full, Unfinished

### Exterior

Exterior	Brick
Exterior Features	Back Lane, Fenced, Fruit Trees/Shrubs, Landscaped, Schools, Shopping Nearby
Roof	Asphalt Shingles
Construction	Brick
Foundation	Brick

### Additional Information

Date Listed August 15th, 2025

Days on Market 1

Zoning Zone 15

DATA IS DEEMED RELIABLE BUT IS NOT GUARANTEED ACCURATE BY THE REALTORS® ASSOCIATION OF EDMONTON. COPYRIGHT 2025 BY THE REALTORS® ASSOCIATION OF EDMONTON. ALL RIGHTS RESERVED. Trademarks are owned or controlled by the Canadian Real Estate Association (CREA) and identify real estate professionals who are members of CREA (REALTOR®, REALTORS®) and/or the quality of services they provide (MLS®, Multiple Listing Service®)

Listing information last updated on August 16th, 2025 at 2:02pm MDT