

\$220,000 - 402 13830 150 Avenue, Edmonton

MLS® #E4454253

\$220,000

2 Bedroom, 2.00 Bathroom, 956 sqft
Condo / Townhouse on 0.00 Acres

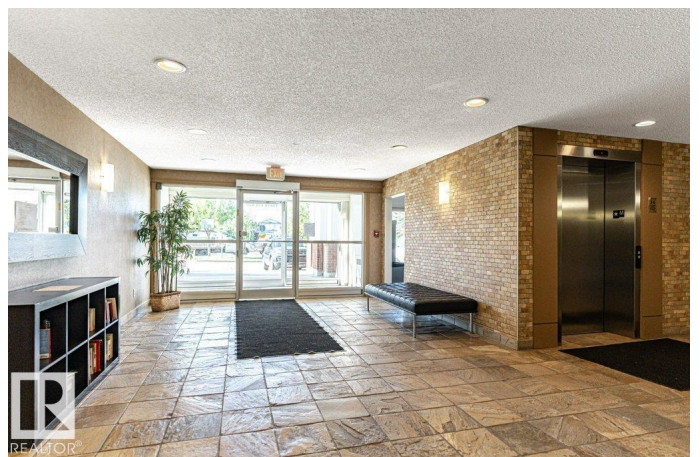
Cumberland, Edmonton, AB

Check out this bright 2 BEDROOM, 2 BATH TOP FLOOR CORNER UNIT with large wrap around balcony. The unit was freshly painted (2023) & has wide plank laminate & tile throughout. The spacious living room has windows on 2 sides & a patio door to the wraparound balcony w/ gas BBQ hookup. The U-shaped kitchen has lots of cabinets, granite counters w/ a raised eating bar & black appliances. Primary bedroom has a walk thru closet & 3 pce. ensuite with a newer shower. The 2nd bedroom is right next to the 4 pce. main bath... perfect for overnight guests or a home office. The unit has a storage room w/ stackable washer/dryer & a 2nd storage room located on the 4th floor. There is a titled underground parking stall. Lots of visitor parking, an exercise room & social room. Are you an investor? Unit is currently tenant occupied with great long term tenants willing to stay & sign a lease. Solid unit in a well managed & well maintained building. Great community close to all the amenities & services youâ€™ll need!

Built in 2004

Essential Information

MLS® #	E4454253
Price	\$220,000



Bedrooms	2
Bathrooms	2.00
Full Baths	2
Square Footage	956
Acres	0.00
Year Built	2004
Type	Condo / Townhouse
Sub-Type	Lowrise Apartment
Style	Single Level Apartment
Status	Active

Community Information

Address	402 13830 150 Avenue
Area	Edmonton
Subdivision	Cumberland
City	Edmonton
County	ALBERTA
Province	AB
Postal Code	T6V 1X2

Amenities

Amenities	Deck, Intercom, No Animal Home, No Smoking Home, Parking-Visitor, Party Room, Recreation Room/Centre, Secured Parking, Security Door, Social Rooms, Storage-Locker Room, Television Connection
Parking	Parkade, Underground

Interior

Interior Features	ensuite bathroom
Appliances	Dishwasher-Built-In, Microwave Hood Fan, Refrigerator, Stacked Washer/Dryer, Stove-Electric
Heating	Baseboard, Hot Water, Natural Gas
# of Stories	4
Stories	1
Has Basement	Yes
Basement	None, No Basement

Exterior

Exterior	Wood, Brick, Vinyl
Exterior Features	Playground Nearby, Public Transportation, Schools, Shopping Nearby

Roof	Asphalt Shingles
Construction	Wood, Brick, Vinyl
Foundation	Concrete Perimeter

Additional Information

Date Listed	August 22nd, 2025
Days on Market	1
Zoning	Zone 27
Condo Fee	\$595

DATA IS DEEMED RELIABLE BUT IS NOT GUARANTEED ACCURATE BY THE REALTORS® ASSOCIATION OF EDMONTON. COPYRIGHT 2025 BY THE REALTORS® ASSOCIATION OF EDMONTON. ALL RIGHTS RESERVED. Trademarks are owned or controlled by the Canadian Real Estate Association (CREA) and identify real estate professionals who are members of CREA (REALTOR®, REALTORS®) and/or the quality of services they provide (MLS®, Multiple Listing Service®)

Listing information last updated on August 23rd, 2025 at 1:02pm MDT