

\$424,900 - 1004 Carter Crest Road, Edmonton

MLS® #E4454321

\$424,900

3 Bedroom, 2.50 Bathroom, 1,180 sqft

Condo / Townhouse on 0.00 Acres

Carter Crest, Edmonton, AB

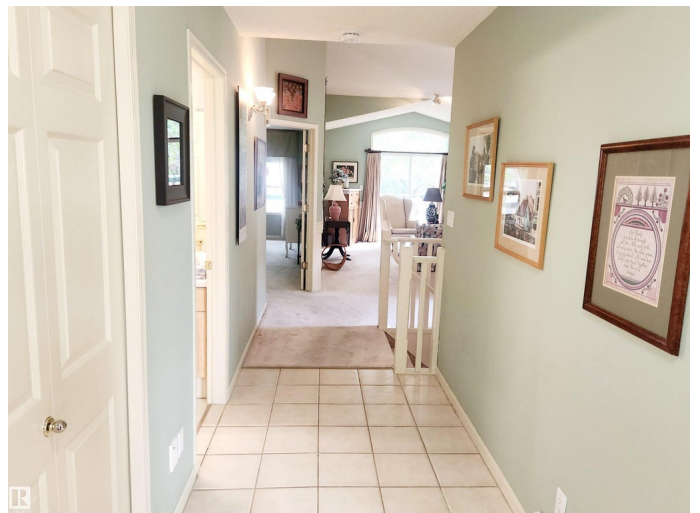
Welcome to the prestigious Palisades of Whitemud (18+), where you'll enjoy the comfort of maintenance-free living in this well maintained 1,179 sqft end unit bungalow. Step inside to the bright main with vaulted ceilings & an abundance of windows that fill the space with natural light. The living room features a cozy gas fireplace & opens to the spacious dining area. The bright kitchen offers ample cabinetry, counter space & a cheerful breakfast nook. The large primary includes a walk-in closet, 4pc ensuite while a 2nd bedroom, 2pc & laundry complete the level. The fully finished basement is complete with a huge 3rd bedroom-perfect for guests, 4pc, recreation room with a 2nd fireplace & large storage room. This quiet & well run complex offers an unbeatable location just minutes to Riverbend Square, Terwillegar Rec Centre, parks, walking trails, public transit, and easy access to Whitemud Drive & Anthony Henday. A fantastic opportunity in one of Edmonton's most desirable communities. A must see!

Built in 1992

Essential Information

MLS® # E4454321

Price \$424,900



Bedrooms	3
Bathrooms	2.50
Full Baths	2
Half Baths	1
Square Footage	1,180
Acres	0.00
Year Built	1992
Type	Condo / Townhouse
Sub-Type	Townhouse
Style	Bungalow
Status	Active

Community Information

Address	1004 Carter Crest Road
Area	Edmonton
Subdivision	Carter Crest
City	Edmonton
County	ALBERTA
Province	AB
Postal Code	T6R 2K2

Amenities

Amenities	Deck, Vaulted Ceiling
Parking	Double Garage Attached

Interior

Interior Features	ensuite bathroom
Appliances	Dishwasher-Built-In, Dryer, Hood Fan, Oven-Microwave, Refrigerator, Stove-Electric, Washer, Window Coverings
Heating	Forced Air-1, Natural Gas
Fireplace	Yes
Fireplaces	Mantel, Tile Surround
Stories	2
Has Basement	Yes
Basement	Full, Finished

Exterior

Exterior	Wood, Stucco
Exterior Features	Cul-De-Sac, Fenced, Landscaped, Low Maintenance Landscape, No

	Through Road, Public Transportation, Shopping Nearby
Roof	Asphalt Shingles
Construction	Wood, Stucco
Foundation	Concrete Perimeter

Additional Information

Date Listed	August 22nd, 2025
Days on Market	1
Zoning	Zone 14
Condo Fee	\$482

DATA IS DEEMED RELIABLE BUT IS NOT GUARANTEED ACCURATE BY THE REALTORS® ASSOCIATION OF EDMONTON. COPYRIGHT 2025 BY THE REALTORS® ASSOCIATION OF EDMONTON. ALL RIGHTS RESERVED. Trademarks are owned or controlled by the Canadian Real Estate Association (CREA) and identify real estate professionals who are members of CREA (REALTOR®, REALTORS®) and/or the quality of services they provide (MLS®, Multiple Listing Service®)

Listing information last updated on August 23rd, 2025 at 7:47am MDT