

\$519,900 - 5011 190a Street, Edmonton

MLS® #E4455749

\$519,900

3 Bedroom, 2.50 Bathroom, 1,877 sqft

Single Family on 0.00 Acres

Jamieson Place, Edmonton, AB

Welcome to the family friendly community of Jamieson Place! This custom-built home has been immaculately kept by its original owner. The main floor features an open concept kitchen, dining & living area, complete with a bright den/office space with front & back windows, a cozy gas fireplace & large windows that create a warm, inviting space. Upstairs youâ€™™ll find three bedrooms, including a primary retreat with a 4pc ensuite and large WIC, plus a HUGE bonus room with vaulted ceilings & expansive windows - perfect for a playroom, theatre, or family space. Recent updates include AC, high-rise toilets (2018), vinyl plank flooring, & refreshed bathroom and laundry flooring (2021). Major upgrades in 2023 include a high-efficiency furnace with humidifier and FULL ROOF REPLACEMENT. Out back you will find a large 2 tier deck with a gas line roughed-in and landscaped yard. Additional features include a front porch, electrical soffit plug-ins, close to schools, public transit, parks & more!

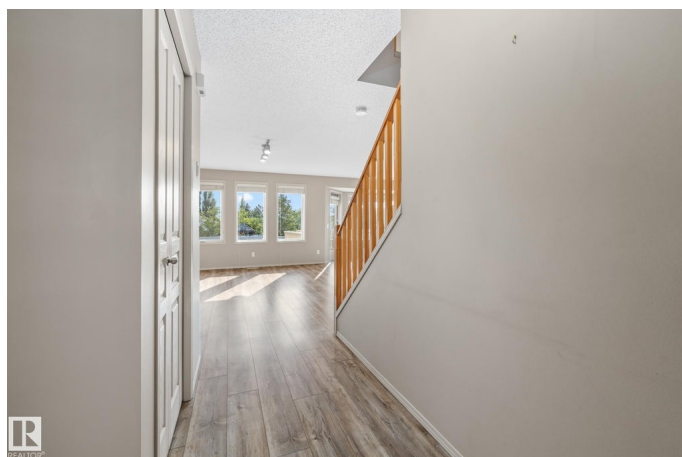
Built in 2002

Essential Information

MLS® # E4455749

Price \$519,900

Bedrooms 3



Bathrooms	2.50
Full Baths	2
Half Baths	1
Square Footage	1,877
Acres	0.00
Year Built	2002
Type	Single Family
Sub-Type	Detached Single Family
Style	2 Storey
Status	Active

Community Information

Address	5011 190a Street
Area	Edmonton
Subdivision	Jamieson Place
City	Edmonton
County	ALBERTA
Province	AB
Postal Code	T6M 2T7

Amenities

Amenities	On Street Parking, Air Conditioner, Deck, Front Porch, No Smoking Home, Vaulted Ceiling, See Remarks
Parking	Double Garage Attached

Interior

Interior Features	ensuite bathroom
Appliances	Dishwasher-Built-In, Dryer, Garage Control, Garage Opener, Microwave Hood Fan, Refrigerator, Stove-Electric, Washer, Window Coverings
Heating	Forced Air-1, Natural Gas
Fireplace	Yes
Fireplaces	Mantel
Stories	2
Has Basement	Yes
Basement	Full, Unfinished

Exterior

Exterior	Wood, Vinyl
Exterior Features	Fenced, Golf Nearby, Landscaped, Playground Nearby, Public

	Transportation, Schools, Shopping Nearby, See Remarks
Roof	Asphalt Shingles
Construction	Wood, Vinyl
Foundation	Concrete Perimeter

Additional Information

Date Listed	September 3rd, 2025
Days on Market	4
Zoning	Zone 20

DATA IS DEEMED RELIABLE BUT IS NOT GUARANTEED ACCURATE BY THE REALTORS® ASSOCIATION OF EDMONTON. COPYRIGHT 2025 BY THE REALTORS® ASSOCIATION OF EDMONTON. ALL RIGHTS RESERVED. Trademarks are owned or controlled by the Canadian Real Estate Association (CREA) and identify real estate professionals who are members of CREA (REALTOR®, REALTORS®) and/or the quality of services they provide (MLS®, Multiple Listing Service®)

Listing information last updated on September 7th, 2025 at 5:02am MDT