

Courtesy Of Samantha King Of RE/MAX River City

\$190,000 - 1702 9916 113 Street, Edmonton

MLS® #E4456310

\$190,000

2 Bedroom, 2.00 Bathroom, 831 sqft
Condo / Townhouse on 0.00 Acres

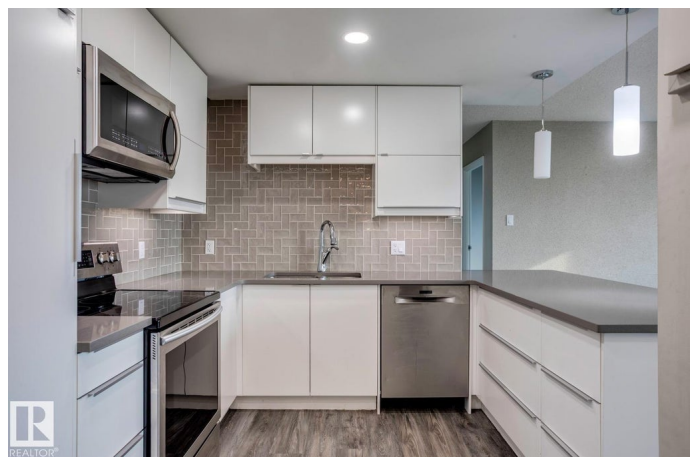
W&hkw&ant&win, Edmonton, AB

LOCATION, VIEWS, AND VALUE! This stylish, FULLY RENOVATED 2-bedroom, 2-bath condo is perfectly positioned high on the second-from-top floor with sweeping balcony views of the River Valley, High Level Bridge, Legislature grounds, and downtown skyline. The open-concept layout offers bright living space with bedrooms on opposite sides for added privacy. The primary suite includes a 4-piece ensuite, while the second bedroom and full bath complete the design. Heated underground parking, a car wash bay, and an almost completed outdoor courtyard add everyday convenience and comfortable living. Laundry is one floor down, or install in-suite with board approval – there’s already space for it. Condo fees include all utilities except electricity for simple budgeting. One of Edmonton’s most walkable areas, you’re steps from the LRT, Victoria Park, the River Valley, U of A, MacEwan, shops, and restaurants. Easy, upgraded, and centrally located!

Built in 1981

Essential Information

MLS® #	E4456310
Price	\$190,000
Bedrooms	2



Bathrooms	2.00
Full Baths	2
Square Footage	831
Acres	0.00
Year Built	1981
Type	Condo / Townhouse
Sub-Type	Apartment High Rise
Style	Single Level Apartment
Status	Active

Community Information

Address	1702 9916 113 Street
Area	Edmonton
Subdivision	W&hkw&ant&win
City	Edmonton
County	ALBERTA
Province	AB
Postal Code	T5K 2N3

Amenities

Amenities	Car Wash, Closet Organizers, Intercom, No Animal Home, No Smoking Home, Parking-Visitor
Parking Spaces	1
Parking	Heated, Underground

Interior

Interior Features	ensuite bathroom
Appliances	Dishwasher-Built-In, Microwave Hood Fan, Refrigerator, Stove-Electric, Window Coverings
Heating	Baseboard, Natural Gas
# of Stories	18
Stories	1
Has Basement	Yes
Basement	None, No Basement

Exterior

Exterior	Concrete, Brick
Exterior Features	Golf Nearby, Public Transportation, River Valley View, Shopping Nearby, View Downtown, See Remarks

Roof	Tar & Gravel
Construction	Concrete, Brick
Foundation	Slab

Additional Information

Date Listed	September 5th, 2025
Days on Market	52
Zoning	Zone 12
Condo Fee	\$839

DATA IS DEEMED RELIABLE BUT IS NOT GUARANTEED ACCURATE BY THE REALTORS® ASSOCIATION OF EDMONTON. COPYRIGHT 2025 BY THE REALTORS® ASSOCIATION OF EDMONTON. ALL RIGHTS RESERVED. Trademarks are owned or controlled by the Canadian Real Estate Association (CREA) and identify real estate professionals who are members of CREA (REALTOR®, REALTORS®) and/or the quality of services they provide (MLS®, Multiple Listing Service®)

Listing information last updated on October 26th, 2025 at 8:17pm MDT