

Courtesy Of John Rota Of Exp Realty

# \$1,550,000 - 1304 14105 West Block Drive, Edmonton

MLS® #E4461499

**\$1,550,000**

3 Bedroom, 2.50 Bathroom, 1,767 sqft  
Condo / Townhouse on 0.00 Acres

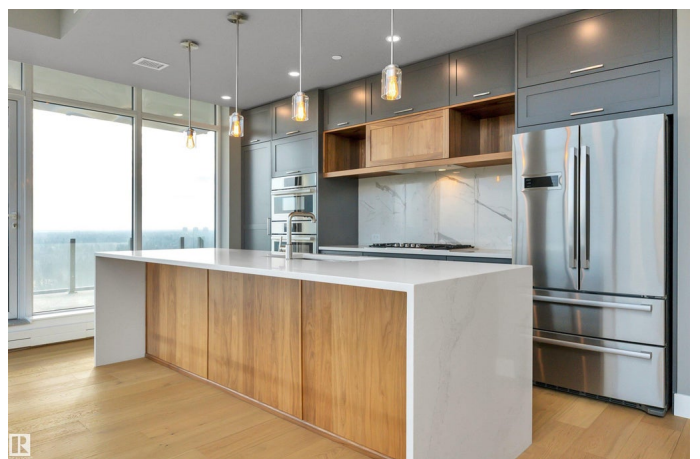
Glenora, Edmonton, AB

Step into luxury with this stunning 1768 sq ft West Block condominium where modern design and upscale living come together beautifully. Featuring 3 spacious bedrooms including a serene primary retreat with a spa-inspired ensuite plus 1.5 additional bathrooms, this home offers both elegance and everyday comfort. Soak in the sweeping city and downtown skyline views from your expansive corner balcony, perfect for entertaining or unwinding in style. Every detail has been thoughtfully designed from central air conditioning and built-in appliances to sleek contemporary finishes that elevate your lifestyle. Located in the highly sought-after West Block community, you will love being just steps away from shopping, playgrounds, and schools. This is more than a home, it is your invitation to live the vibrant luxurious urban lifestyle you have been waiting for.

Built in 2019

## Essential Information

MLS® #	E4461499
Price	\$1,550,000
Bedrooms	3
Bathrooms	2.50
Full Baths	2
Half Baths	1



Square Footage	1,767
Acres	0.00
Year Built	2019
Type	Condo / Townhouse
Sub-Type	Apartment High Rise
Style	Single Level Apartment
Status	Active

### Community Information

Address	1304 14105 West Block Drive
Area	Edmonton
Subdivision	Glenora
City	Edmonton
County	ALBERTA
Province	AB
Postal Code	T5N 1L5

### Amenities

Amenities	Air Conditioner, Dog Run-Fenced In, Hot Water Instant, No Animal Home, No Smoking Home, Sprinkler System-Fire
Parking	Triple Garage Attached

### Interior

Interior Features	ensuite bathroom
Appliances	Air Conditioning-Central, Dishwasher-Built-In, Oven-Built-In, Oven-Microwave, Refrigerator, Stacked Washer/Dryer, Stove-Countertop Gas, Wine/Beverage Cooler
Heating	Heat Pump, Natural Gas
Fireplace	Yes
Fireplaces	Granite Surround
# of Stories	16
Stories	1
Has Basement	Yes
Basement	None, No Basement

### Exterior

Exterior	Concrete, Metal, Stone
Exterior Features	Corner Lot, Playground Nearby, Schools, Shopping Nearby, View City, View Downtown

Roof	EPDM Membrane
Construction	Concrete, Metal, Stone
Foundation	Concrete Perimeter

### **School Information**

Elementary	Grovenor School
Middle	Westminster School
High	Ross Sheppard School

### **Additional Information**

Date Listed	October 9th, 2025
Days on Market	26
Zoning	Zone 11
Condo Fee	\$1,986

DATA IS DEEMED RELIABLE BUT IS NOT GUARANTEED ACCURATE BY THE REALTORS® ASSOCIATION OF EDMONTON. COPYRIGHT 2025 BY THE REALTORS® ASSOCIATION OF EDMONTON. ALL RIGHTS RESERVED. Trademarks are owned or controlled by the Canadian Real Estate Association (CREA) and identify real estate professionals who are members of CREA (REALTOR®, REALTORS®) and/or the quality of services they provide (MLS®, Multiple Listing Service®)

Listing information last updated on November 4th, 2025 at 6:02pm MST